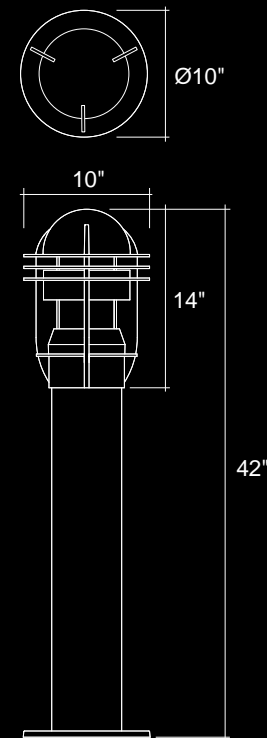


Maxi



Dimensions



The Saturna family of luminaires consists of clean simple lines that form a classic shape to suit any architectural expression.

With a robust yet refined construction, the Saturna maxi bollards are ideal for areas where durability and weather resistance are priority.

Saturna bollard luminaires provide wayfinding light direction while symmetrical illumination provides a dramatic light pattern. The three rings and glare band are consistent with the Saturna family and shield the lamp while helping to reduce glare. Heavy aluminum construction, stainless steel hardware and borosilicate glass shielding make this luminaire suitable for extreme environmental conditions.

Saturna bollard luminaires are listed for wet locations to UL/CSA standards.

Rebelle's standard powder paint finishes are available. RAL or custom powder paint finishes can be specified.

For detailed information on all Saturna luminaires please refer to our website rebellelighting.com.

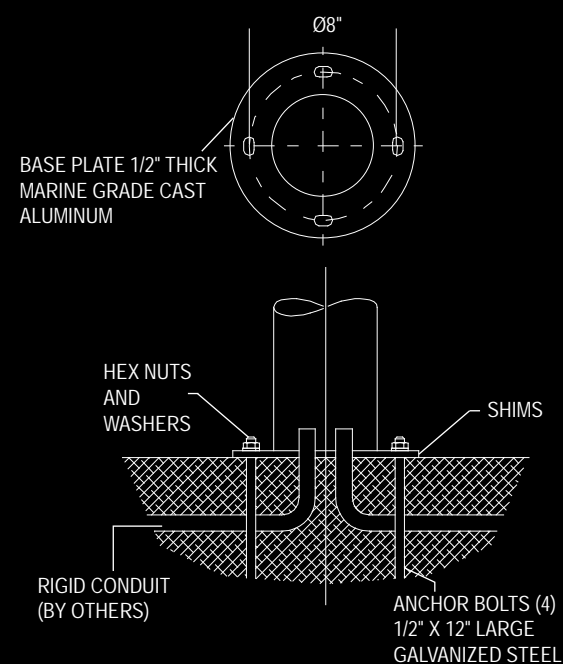
Saturna

Bollard

Maxi
Landscape



Landscape Bollard 4009



Base Mounting Details

