

Sightlines 1573SSLED Maxi Step/Path Low Level Area Light EXTERIOR

MODEL	LED	COLOR TEMPERATURE	VOLT	FACEPLATE	OPTIONS	COLOR
1573SS	15L	40 x 0.28 watts 1580 lumens ¹	40*	4000K	120*	SS <i>Stainless steel requires periodic maintenance to remove dirt and contaminants, similar to household stainless steel.</i>
	7L	20 x 0.30 watts 825 lumens ¹	30	3000K	208	
					240	
					277	

*Standard configuration unless otherwise specified

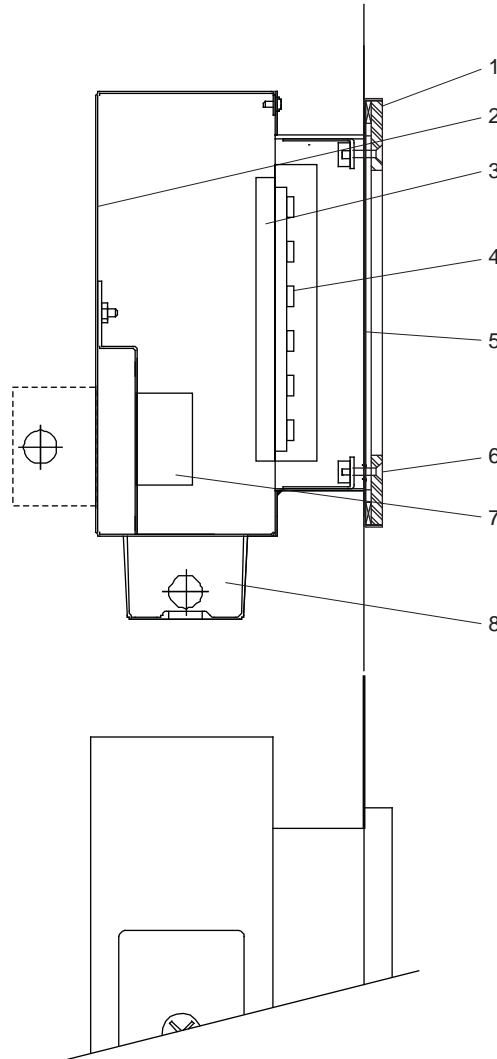
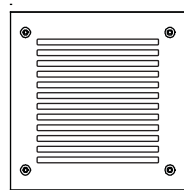
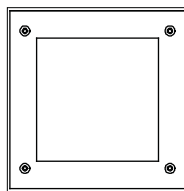
¹ Source lumens

SAMPLE CATALOG NUMBER: 1573SS - 15L - 40 - 120 - LV - WT

Using this catalog number would order 1 model 1573SS low level area light with 40 x 0.28 watt LEDs with a color temperature of 4000K wired to 120 volts and a slotted stainless steel faceplate.

CONSTRUCTION	MOUNTING	OPTICAL	PROTECTION
<p>Materials Faceplate: Stainless steel, #4 brushed finish. Housing: .064" aluminum protected with high gloss white polyester powder coat. Lens: Tempered, sealed prismatic glass. Junction box: Gasketed, die cast aluminum, bottom mounted (field adjustable to rear mount) suitable for through branch circuit conductors, suitable for 90°C. (3) - 1/2 NPT plugs, neoprene rubber gaskets.</p> <p>Electrical components LED driver constant current, integral mounted, 460mA (15L) or 500mA (7L). LED boards >82CRI.</p>	<p>The Sightlines 1573SSLED series is designed for concrete pour installations and hollow wall construction in compact fluorescent versions. Units are non IC rated so the insulation, if any, must be kept 3" away from the housing and the housing should have 1/2" clearance all around except at the mounting points/surface. See Installation Instructions on the Rebelle website for further details. Conduits must be sealed against water entry into the fixture housing as outlined in the National Electric Code.</p>	<p>The 1573SSLED units are designed to be mounted within 1' to 2' feet of the ground or floor level. The faceplate is provided in a slotted style to eliminate glare and provide illumination on paths, aisles and stairs. An open face with a prismatic glass lens is available for areas that require higher intensity levels. The reflector system is sealed against the ingress of water and other contaminants.</p>	<p>The Sightlines 1573SSLED series is listed for use in wet locations within four feet of the ground to CSA and UL standards. Conduit must be sealed to exclude water from entering the housing.</p>

Concrete Pour & Hollow
Wall Applications



Sightlines 1573SSLED Detailed Product Description

- | | |
|---|---|
| <p>1 Gasketed Faceplate - Stainless Steel with Enclosure Trim</p> <p>2 Housing .064" Aluminum Protected with White Polyester Powder Coat</p> <p>3 Thermal Heat Sink Panel</p> <p>4 LED Module</p> <p>5 Tempered and Sealed Prismatic Glass Lens</p> | <p>6 (4) #10 - 24 Flat HD Cap Screws - Stainless</p> <p>7 LED Driver - Constant Current, IP66</p> <p>8 Junction Box - Suitable for 4 No. 12 AWG Through Branch Circuit Conductors Suitable for 90°C.
(3) - 1/2 NPT Plugs, Neoprene Rubber Gaskets, Bottom Mount Standard (Back mount is field adjustable)</p> |
|---|---|