

# Orchestra Circle 2757PLED Mini Pendant Mount

INTERIOR

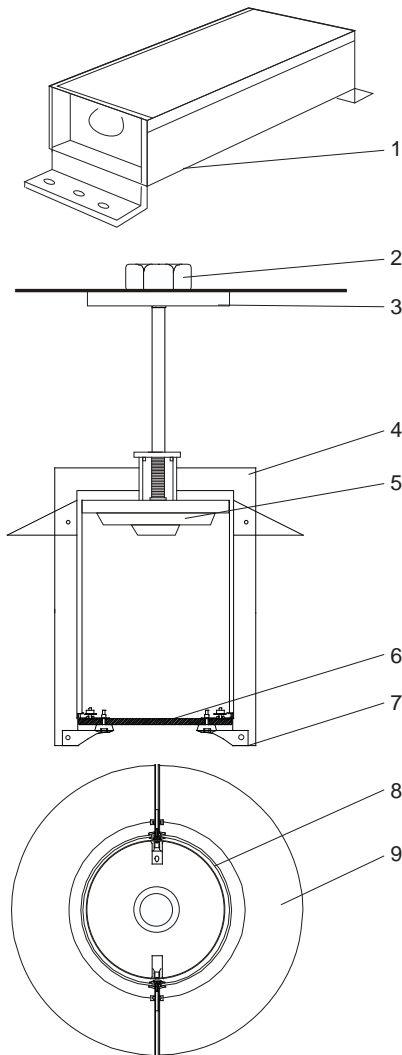
MODEL	LED		VOLT	SHIELD	DIFFUSER	DRIVER LOCATION		OPTIONS	COLOR	
	WATTS	COLOR TEMPERATURE								
2757P	20L 1313 lumens* 20w LED/ 23w system	40 4000K	120*	PF perforated liner	RF* frost	REM*	remote driver	P( __") pendant length	WT	white texture
		30 3000K	208		CL clear	INT	integral driver		BT	black texture
		35 3500K	240					C86 ball aligner hanger	SM	silver metallic
			277						AN	aluminum natural
			347+					WL wet location listing	BZ	bronze
								DIM dimming driver	GM	gunmetal
									WS	white satin
									BM	black matte
								90 90 CRI	RAL	specify no.

\*Standard configuration unless otherwise specified    \*Delivered lumens based on PF option and standard frost diffuser (4000K, 80 CRI)    +Consult factory

SAMPLE CATALOG NUMBER: 2757P - 20L40 - 120 - RF - REM - P24 - WT

Using this catalog number would order 1 model 2757PLED mini circle pendant with LED light engine, 4000K, 80 CRI wired to 120 volts with frosted acrylic lens, remote driver, pendant length of 24" and painted with white texture polyester powder coat.

CONSTRUCTION	MOUNTING	OPTICAL	PROTECTION
<p>Materials Support Frame: Heavy aluminum plate. Hinge/Lock up: Pressure die cast aluminum. Ceiling canopy / Reflector disk: Aluminum sheet, die formed. Diffusers (side): Thermo-formed acrylic. Bottom lens: Acrylic. Fasteners: Stainless steel.</p> <p>Electrical Components Driver: Constant current 550 mA, 84% efficiency. Light engine: COB 1205 24mm x 20mm with a 13mm LES.</p>	<p>This luminaire is designed to mount to a recessed 4" octagon j-box (by others). Remote mounted driver assemblies are standard (consult factory for lamp to driver distance). Optional integral driver assemblies are offered. For wet locations luminaire must be restrained from wind action. Special hanger or restraint required (by others).</p>	<p>Luminaire has a choice of frost or clear lens and diffuser, with frost supplied as standard. The perforated liner is supplied if specified. Reflector disk is set at the top position. Standard optic is Type V square (130°).</p>	<p>The Orchestra mini pendant is listed for use in damp locations to UL and CSA Standards. An optional wet location label can be provided. (LOC 2, covering ceiling)</p> <p>LEDs are rated for 50,000 hour life with lumen maintenance &gt;70% (L70).</p>



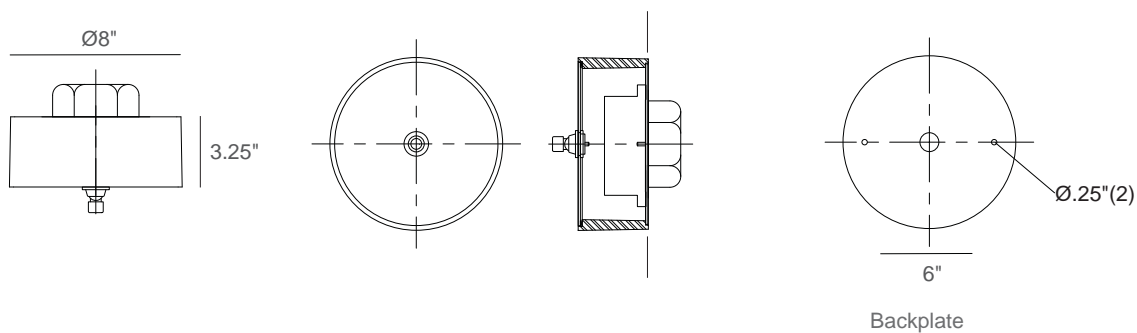
## Orchestra Circle 2757PLED Detailed Product Description

- |   |   |   |  |
|---|---|---|--|
| 1 | Remote Driver Housing - 20 ga. CRS                          | 6 | Acrylic Lens .375" Thick                           |
| 2 | 4" Recessed Octagon J-Box (By Others)                       | 7 | Diecast Aluminum Lock Up                           |
| 3 | Canopy Assembly With Hangstraight                           | 8 | Acrylic Cylinder .125" Thick                       |
| 4 | Frame Support .250" Aluminum                                | 9 | Reflector Disk .081" Aluminum (Fixed Top Position) |
| 5 | Downlight LED Light Engine with Silicone Optic and Heatsink |   |  |

## Orchestra Circle 2757PLED Mini Ceiling Mount

### Integral Driver Canopy Description

---



### Remote Driver Description

---

