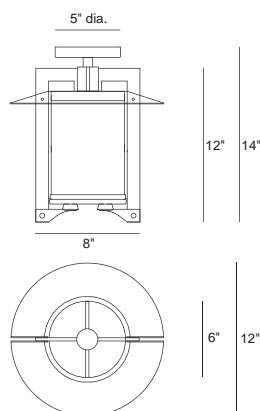




Integral driver option shown less reflector disk



Orchestra Circle 2757LED Mini Ceiling Mount

INTERIOR

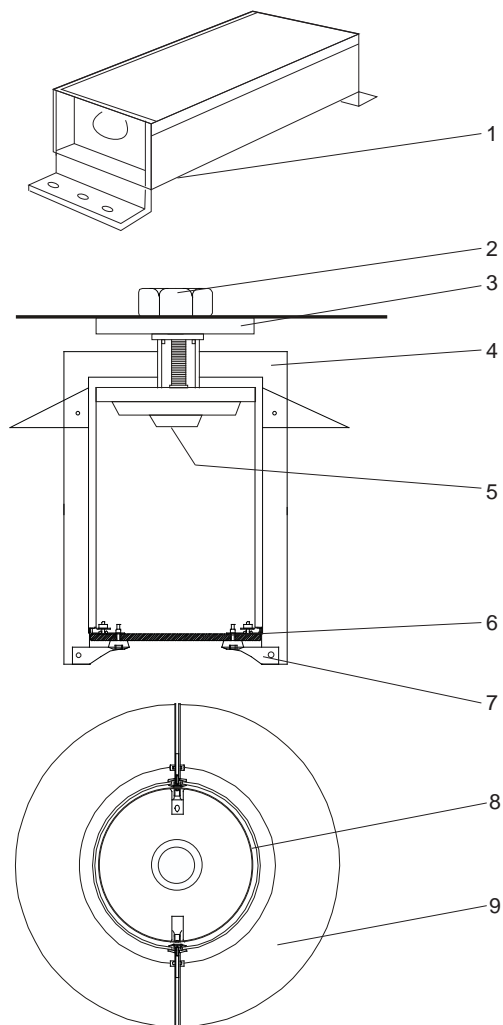
MODEL	LED		VOLT	SHIELD	DIFFUSER	DRIVER LOCATION	OPTIONS	COLOR
	WATTS	COLOR TEMPERATURE						
2757	20L 1313 lumens ¹ 20w LED/ 23w system	40 4000K	120*	PF <i>perforated liner</i>	RF* <i>frost</i>	REM* <i>remote driver</i>	WL <i>wet location listing</i>	WT <i>white texture</i>
		30 3000K	208		CL <i>clear</i>	INT <i>integral driver</i>		BT <i>black texture</i>
		35 3500K	240				DIM <i>dimming driver</i>	SM <i>silver metallic</i>
			277					AN <i>aluminum natural</i>
			347+				90 <i>90 CRI</i>	BZ <i>bronze</i>
								GM <i>gunmetal</i>
								WS <i>white satin</i>
								BM <i>black matte</i>
								RAL <i>specify no.</i>

*Standard configuration unless otherwise specified ¹Delivered lumens based on PF option and standard frost diffuser (4000K, 80 CRI) +Consult factory

SAMPLE CATALOG NUMBER: 2757 - 20L40 - 120 - RF - REM - WT

Using this catalog number would order 1 model 2757LED mini circle ceiling mount with LED light engine, 4000K, 80 CRI wired to 120 volts with frosted acrylic lens and painted with white texture polyester powder coat.

CONSTRUCTION	MOUNTING	OPTICAL	PROTECTION
<p>Materials Support Frame: Heavy aluminum plate. Hinge/Lock up: Pressure die cast aluminum. Ceiling canopy / Reflector disk: Aluminum sheet, die formed. Diffusers (side): Thermo-formed acrylic. Bottom lens: Acrylic. Fasteners: Stainless steel.</p> <p>Electrical Components Drivers: Constant current 550 mA, 84% efficiency. Light engine: COB 1205 24mm x 20mm with a 13mm LES.</p>	<p>This luminaire is designed to mount to a recessed 4" octagon j-box (by others). Remote mounted driver assemblies are standard (consult factory for lamp to driver distance). Optional integral driver assemblies are offered. For wet locations luminaire must be restrained from wind action. Special hanger or restraint required (by others).</p>	<p>Luminaire has a choice of frost or clear lens and diffuser, with frost supplied as standard. The reflector disk is set at the top position. Standard optic, Type V square (130°).</p>	<p>The Orchestra mini ceiling mount is listed for use in damp locations to UL and CSA standards. An optional wet location label can be provided. (LOC 1, covering ceiling)</p> <p>LEDs are rated for 50,000 hour life with lumen maintenance >70% (L70).</p>



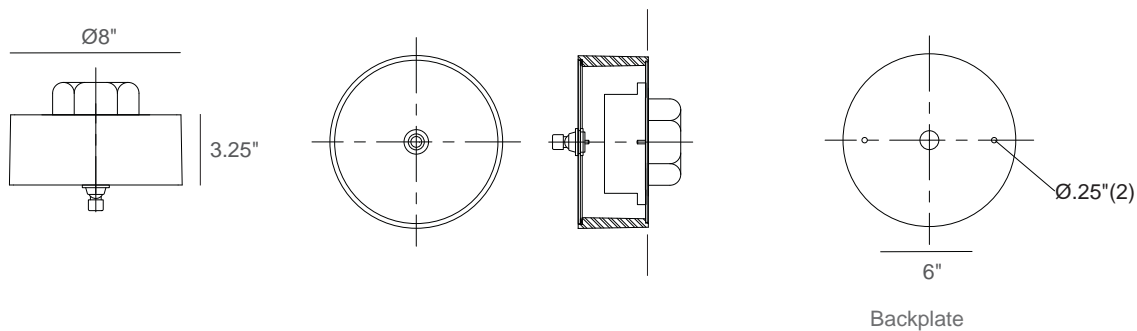
Remote Driver Configuration

Orchestra Circle 2757LED Detailed Product Description

- | | | | |
|---|--|---|--|
| 1 | Remote Driver Housing - 20 ga. CRS | 6 | Acrylic Lens .375" Thick |
| 2 | 4" Recessed Octagon J-Box (By Others) | 7 | Diecast Aluminum Lock Up |
| 3 | Canopy Assembly | 8 | Acrylic Cylinder (.125" Thick) |
| 4 | Frame Support .250" Aluminum | 9 | Reflector Disk .081" Aluminum (Fixed Top Position) |
| 5 | LED Light Engine with Silicone Optic and Heat Sink | | |

Orchestra Circle 2757LED Mini Ceiling Mount

Integral Driver Canopy Description



Remote Driver Description

