

Saturna 4000LED Mini Ceiling Mount

INTERIOR

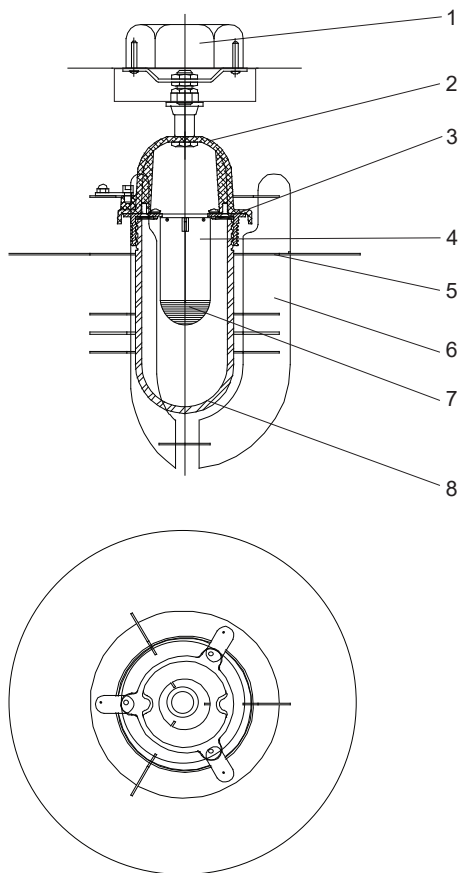
MODEL	LED	COLOR TEMPERATURE	VOLT	LENS	DRIVER LOCATION	OPTIONS	COLOUR
4000	1x16L <i>LED module</i> 16 watt	40* <i>4000K</i> 1700 lumens ¹	120*	RF* <i>frost</i>	REM* <i>remote driver</i>	WL <i>wet location label</i> (covered ceilings only)	WT <i>white texture</i>
			208		INT <i>integral driver</i>		BT <i>black texture</i>
			240				SM <i>silver metallic</i>
			277				AN <i>aluminum natural</i>
			347				BZ <i>bronze</i>
							GM <i>gunmetal</i>
							WS <i>white satin</i>
							BM <i>black matte</i>
							RAL <i>specify no.</i>

*Standard configuration unless otherwise specified ¹Delivered lumens (4000K, 80 CRI)

SAMPLE CATALOG NUMBER: 4000 - 1x16L - 40 - 120 - RF - REM - WT

Using this catalog number would order 1 model 4000 surface ceiling mount luminaire with a 16 watt, 4000K, 1700 lumen light engine wired to 120 volts, with a frosted globe and remote mounted driver, painted with white texture polyester powder coat.

CONSTRUCTION	MOUNTING	OPTICAL	PROTECTION
<p>Materials</p> <p>Luminaire housing: Cast aluminum.</p> <p>Gasket: EPDM rubber. Strut assembly: Aluminum sheet, keyholed removal. Reflector disks: Aluminum sheet. Lens/diffuser: Threaded, 3.4" tempered glass. Fasteners: Stainless steel.</p> <p>LED Components</p> <p>Driver: Constant current, 450mA.</p> <p>Light Engine: Chip-on-Board 13mm</p> <p>LES. Zhaga Book 3 compliant socket.</p>	<p>Luminaire is designed to mount over a recessed 4" octagon j-box. Backstrap mounts to the ears of the j-box. The integral driver option provides a driver compartment at the ceiling line. Additional mounting holes are provided to allow mounting independent of the junction box ears, if integral driver option is requested.</p>	<p>Standard threaded frosted globe. Strut and disk assembly shield light source. Top reflector disk controls upward light.</p>	<p>The Saturna mini ceiling mount is listed for use in damp locations to UL and CSA Standards. An optional wet location label can be provided. LED life: 50,000 hours minimum, L70 @ 25°C.</p>

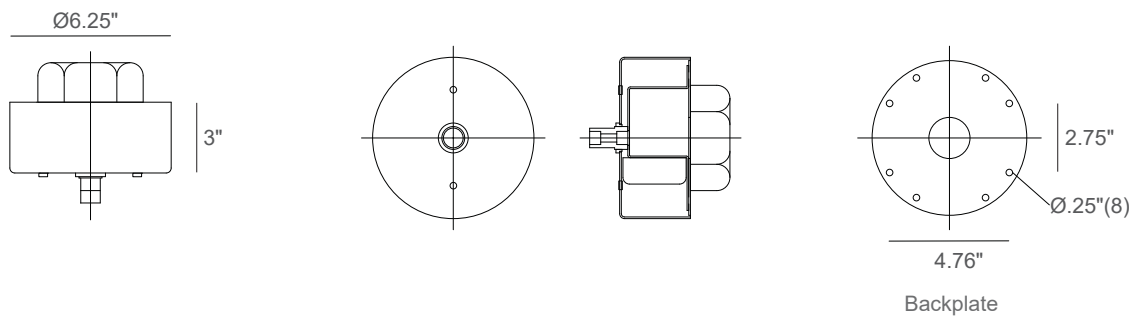


Saturna 4000LED Detailed Product Description

- | | | | |
|---|---------------------------------------|---|---|
| 1 | 4" Recessed Octagon J-Box (By Others) | 6 | Strut Assembly |
| 2 | Housing - Cast Aluminum | 7 | Chip-on-Board 13mm LES, Zhaga Book 3 Compliant Socket |
| 3 | Gasket - E.P.D.M. Rubber | 8 | Lens/Diffuser - Threaded - Tempered |
| 4 | Heatsink | 9 | Driver (Remote Standard) 450 mA, 120-277 Volt Input |
| 5 | Reflector Disks - .102" Aluminum | | |

Saturna 4000LED Mini Ceiling Mount

Integral Driver Canopy Detail



Remote Driver Detail

