

Saturna 4004LED Mini Wall Arm Shepherd's Hook

EXTERIOR

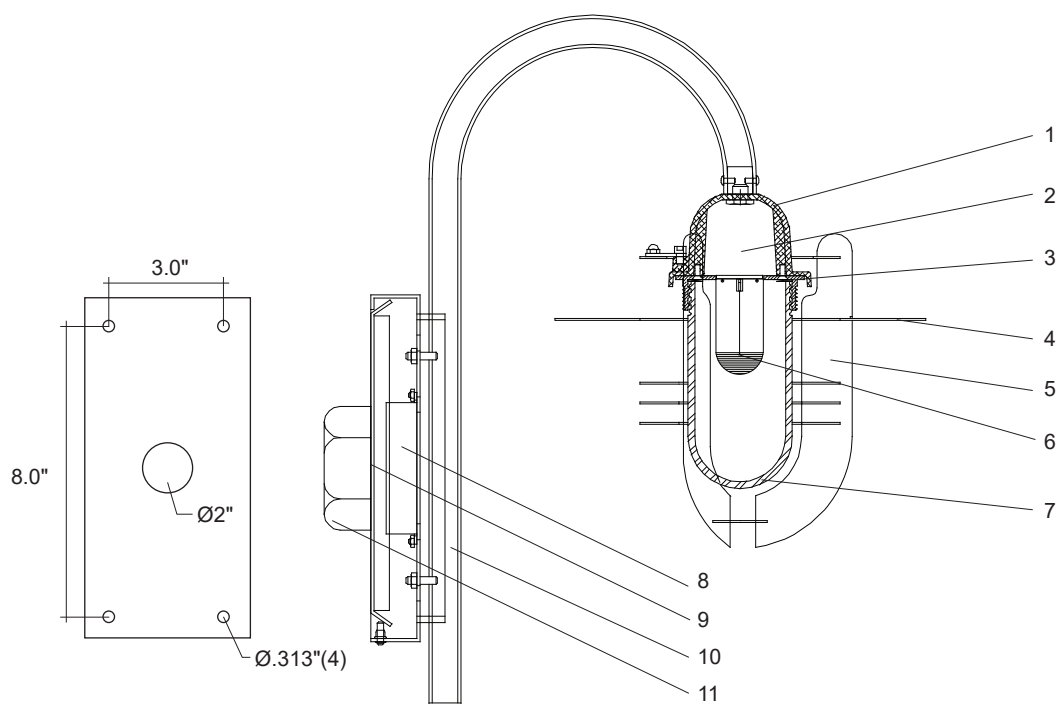
MODEL	LED	COLOR TEMPERATURE	VOLT	LENS	OPTIONS	COLOUR
4004	1x16L <i>LED module</i> 16 watt	40* <i>4000K</i> 1700 lumens ¹	120*	RF* <i>frost</i>	PC <i>button type photocell</i>	WT <i>white texture</i>
			208			BT <i>black texture</i>
			240			SM <i>silver metallic</i>
			277			AN <i>aluminum natural</i>
			347			BZ <i>bronze</i>
						GM <i>gunmetal</i>
						WS <i>white satin</i>
						BM <i>black matte</i>
						RAL <i>specify no.</i>

*Standard configuration unless otherwise specified ¹Delivered lumens (4000K, 80 CRI)

SAMPLE CATALOG NUMBER: 4004 - 1x16L - 40 - 120 - RF - WT

Using this catalog number would order 1 model 4004 wall arm luminaire with a 16 watt, 4000K, 1700 lumen light engine wired to 120 volts, with a frosted glass globe, painted with white texture polyester powder coat.

CONSTRUCTION	MOUNTING	OPTICAL	PROTECTION
<p>Materials Luminaire housing: Cast aluminum. Gasket: EPDM rubber. Strut assembly: Aluminum sheet, keyholed removal. Reflector disks: Aluminum sheet. Lens/diffuser: Threaded, tempered glass. Shepherd's hook arm: Aluminum tubing. Driver compartment and arm spacer: Aluminum sheet (seam welded and ground). Fasteners: Stainless steel.</p> <p>LED Components Driver: Constant current, 450mA. Light Engine: Chip-on-Board 13mm LES, Zhaga Book 3 Compliant Socket.</p>	<p>Luminaire is designed to hook onto a heavy gauge mounting plate. Mounting plate is fixed to the wall surface independent of recessed 4" j-box. Silicone seal is required along the top and down the sides of the driver compartment to exclude moisture.</p>	<p>Standard frosted globe with strut and disk assembly to shield light source. Top reflector disk controls upward light.</p>	<p>The Saturna mini wall arm mount luminaire is listed for use in wet locations to UL and CSA Standards. LED life: 50,000 hours minimum, L70 @ 25°C.</p>



Saturna 4004LED Detailed Product Description

- | | | | |
|---|---|----|---|
| 1 | Housing - Cast Aluminum | 7 | Lens/Diffuser - Threaded, Tempered Glass |
| 2 | Heatsink | 8 | Driver, 450 mA, 120-277 Volt Input |
| 3 | Gasket - E.P.D.M. Rubber | 9 | Mounting Plate .102" Aluminum |
| 4 | Reflector Disks - .102" Aluminum | 10 | Shepherd's Hook Arm 1 - 1/16" x 1/8" Wall Aluminum Tube |
| 5 | Strut Assembly - Keyholed Removal .102" Aluminum | 11 | 4" Recessed Octagon J-Box (By Others) |
| 6 | Chip-on-Board 13mm LES, Zhaga Book 3 Compliant Socket | | |