

# Saturna 4012LED Mini Wall Back Mount Sconce

EXTERIOR

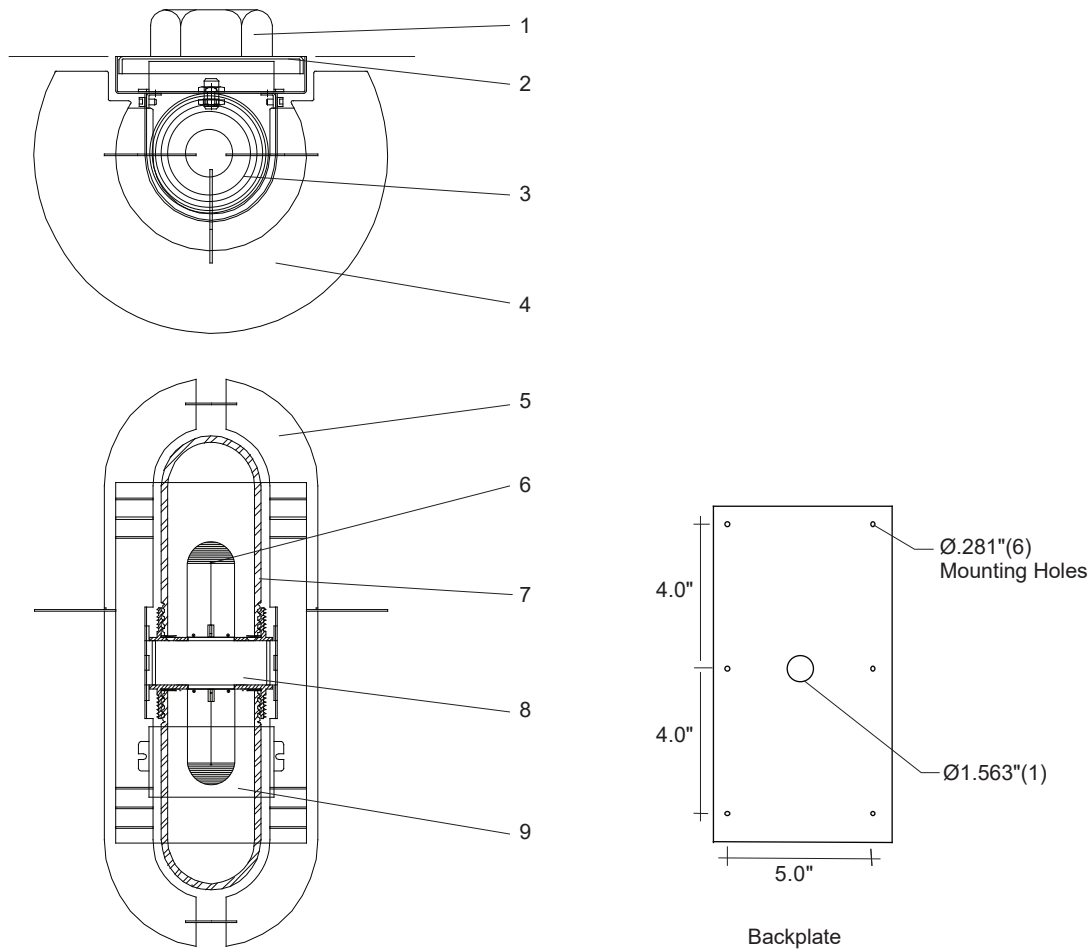
| MODEL | LED                                    | COLOR TEMPERATURE                                | VOLT                             | LENS             | OPTIONS                         | COLOUR  |
|-------|--|--|----------------------------------|------------------|---------------------------------|---|
| 4012  | 2x16L <i>LED module</i><br>2 x 16 watt | 40* <i>4000K</i><br>2 x 1700 lumens <sup>1</sup> | 120*<br>208<br>240<br>277<br>347 | RF* <i>frost</i> | PC <i>button type photocell</i> | WT <i>white texture</i><br>BT <i>black texture</i><br>SM <i>silver metallic</i><br>AN <i>aluminum natural</i><br>BZ <i>bronze</i><br>GM <i>gunmetal</i><br>WS <i>white satin</i><br>BM <i>black matte</i><br>RAL <i>specify no.</i> |

\*Standard configuration unless otherwise specified <sup>1</sup>Delivered lumens each side (4000K, 80CRI)

SAMPLE CATALOG NUMBER: 4012 - 2x16L - 40 - 120 - RF - WT

Using this catalog number would order 1 model 4012 wall back mount sconce with 2 x 16 watt, 4000K, 1700 lumen light engines wired to 120 volts, with frosted glass globes and painted with white texture polyester powder coat.

| CONSTRUCTION  | MOUNTING   | OPTICAL   | PROTECTION  |
|---|--|---|---|
| <p>Materials<br/>Driver housing with LED assembly:<br/>Heavy gauge aluminum. Gasket:<br/>EPDM rubber. Strut and disk<br/>assembly: Heavy gauge aluminum.<br/>Globe fitter: Die cast aluminum.<br/>Lens/diffuser: Threaded, tempered<br/>glass. Fasteners: Stainless steel.</p> <p>LED Components<br/>Driver: Constant current, 450mA.<br/>Light Engine: Chip-on-Board 13mm<br/>LES , Zhaga Book 3 Compliant<br/>Socket.</p> | <p>Luminaire is designed to mount over<br/>a centrally located recessed 4"<br/>octagon j-box. Four mounting holes<br/>are provided to attach luminaire to<br/>the wall. Sealant should be applied<br/>across the top of the backplate and<br/>down the sides to exclude water<br/>entrance. Mounting bracket attaches<br/>to the wall and strut/disk assembly<br/>hooks on top and is secured with<br/>stainless steel set screws.</p> | <p>Luminaire features frosted, tempered<br/>glass threaded globes. Strut and disk<br/>assembly provide a decorative<br/>appearance while providing glare<br/>control and light direction.</p> | <p>The Saturna mini wall sconce is<br/>listed for use in wet locations to UL<br/>and CSA Standards. LED life: 50,000<br/>hours minimum, L70 @ 25°C.</p> |



## Saturna 4012LED Detailed Product Description

- |   |   |   |   |
|---|---|---|---|
| 1 | 4" Recessed Octagon J-Box (By Others)<br>(Located On Center Line) | 6 | Chip-on-Board 13mm LES, Zhaga Book 3 Compliant Socket |
| 2 | Mounting Plate .081" Aluminum                                     | 7 | Lens/Diffuser - Frosted Glass Threaded - Tempered     |
| 3 | Gasket - E.P.D.M. Rubber  | 8 | Fitter Assembly .081" Aluminum and Heatsink           |
| 4 | Reflector Disks .102" Aluminum                                    | 9 | Driver, 450mA, 120-277 Volt Input                     |
| 5 | Strut Assembly .102" Aluminum                                     |   |   |