

# Streamline 6004LED Midi Direct Wall Mount

EXTERIOR

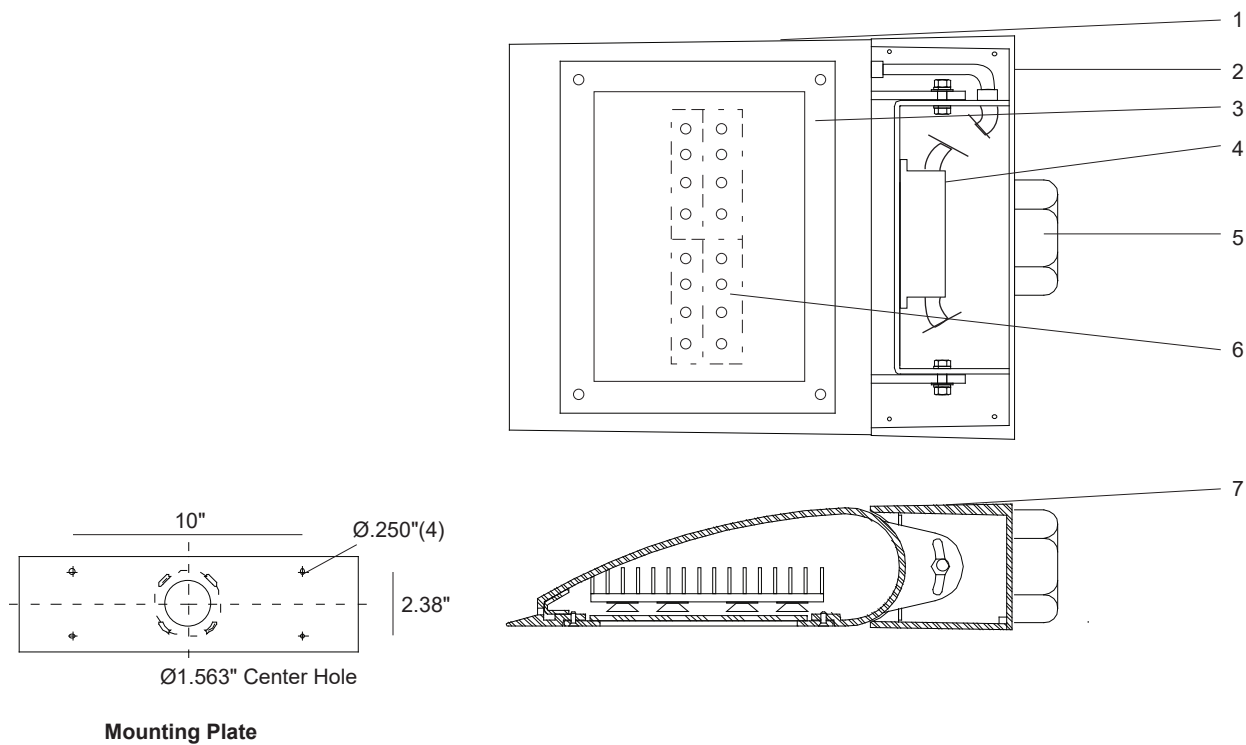
MODEL	WATTS	COLOR TEMPERATURE	VOLT	DISTRIBUTION	OPTIONS	COLOR
6004	134L 1 x 134 watts 10500 lumens <sup>1</sup>	3K 3000K	120*	T2 type II distribution	DIM 0 - 10 volt dimmable driver	WT white texture
	101L 1 x 101 watts 7900 lumens <sup>1</sup>	35K 3500K	208	T3 type III distribution		BT black texture
		4K 4000K	240	T4 type IV distribution		SM silver metallic
		5K 5000K	277			AN aluminum natural
						BZ bronze
						GM gunmetal
						WS white satin
						BM black matte
						RAL specify no.

\*Standard configuration unless otherwise specified <sup>1</sup>Delivered lumens (4000K)

SAMPLE CATALOG NUMBER: 6004LED - 134L - 4K - 120 - T2 - WT

Using this catalog number would order 1 model 6004LED midi direct wall mount luminaire with a 134 watt, 4000K light engine with type II distribution, wired to 120 volts, painted white texture polyester powder coat.

CONSTRUCTION	MOUNTING	OPTICAL	PROTECTION
<p><b>Materials</b> Adjustable lamp housing: Cast aluminum. Driver enclosure: Cast aluminum with top cover plate. Light engine enclosure: Cast aluminum sealed to lens frame. Lens: Clear, tempered glass in cast aluminum gasketed frame.</p> <p><b>Electrical Components</b> Light engine: Aluminum core PCB each with 4 LEDs and Ledil Strata - SQ optics. Driver: High efficiency, &lt;20% THD, &gt;90% PF</p>	<p>The 6004LED series is designed for wall mounting over a 4" octagonal j-box. A heavy gauge mounting plate attaches to the wall surface. Head hooks on to the mounting plate and locks in place with two stainless steel set screws. Silicone seal is required along the top of the driver compartment and down sides to exclude moisture from entering driver compartment. Maximum fixture weight is 32 lbs.</p>	<p>The 6004LED optical system is type II, III or IV with a full cutoff classification.</p>	<p>The 6004LED is listed for use in wet locations to UL and CSA standards.</p> <p>LEDs are rated for 50,000 hour life with lumen maintenance &gt; 70% (L70).</p>



# Streamline Direct 6004LED

## Detailed Product Description

- |   |   |   |                                       |
|---|---|---|---------------------------------------|
| 1 | Adjustable Lamp Housing - Cast Aluminum               | 5 | Recessed 4" Octagon J-Box (By Others) |
| 2 | Driver Enclosure - Cast Aluminum with Top Cover Plate | 6 | LED Boards 4 x LEDs Each              |
| 3 | Enclosed LED Glass Frame and Heat Sink Assembly       | 7 | Housing Assembly                      |
| 4 | Driver  |   |                                       |