

Streamline 6014LED Maxi Indirect Pendant

INTERIOR

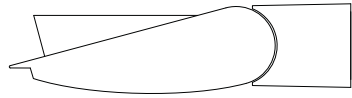
MODEL	WATTS		COLOR TEMPERATURE		VOLT	OPTIONS		COLOR				
6014	200L	1 x 200 watts 18,600 lumens ¹	3K	3000K	120*	P(_")	pendant length	WT	white texture			
			35K	3500K	208	WL	wet location	BT	black texture			
	167L	1 x 167 watts 15,500 lumens ¹	4K	4000K	240	CV	cut-off visor for downward tilt	SM	silver metallic			
			134L	1 x 134 watts 12,400 lumens ¹	5K	5000K	277	DIM	0 - 10 volt dimmable driver	AN	aluminum natural	
										347+	NAT	natatorium construction
			GM	gunmetal								
			WS	white satin								
			BM	black matte								
			RAL	specify no.								

*Standard configuration unless otherwise specified ¹Delivered lumens (4000K) +Consult factory

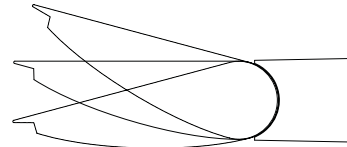
SAMPLE CATALOG NUMBER: 6014 - 200L - 4K - 120 - P24 - WT

Using this catalog number would order 1 model 6014 maxi indirect ceiling wash pendant luminaire with a 200 watt, 4000K light engine wired to 120 volts with a pendant length of 24" and painted white texture polyester powder coat.

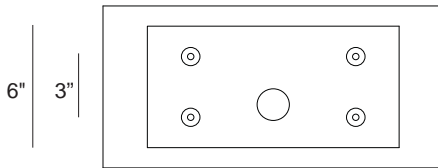
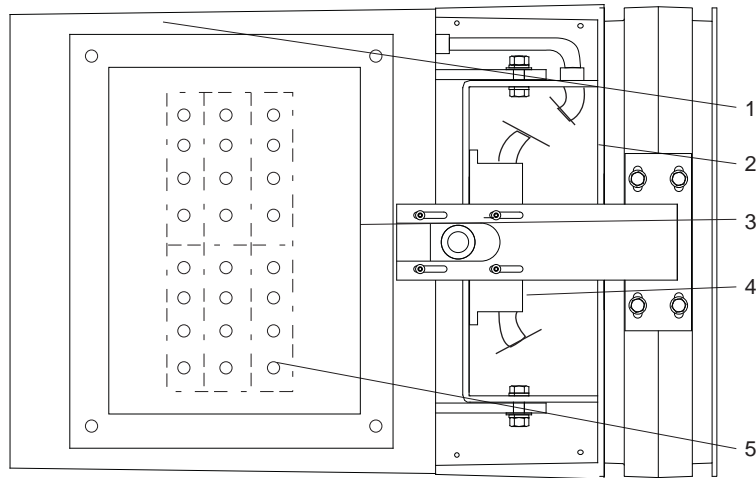
CONSTRUCTION	MOUNTING	OPTICAL	PROTECTION
<p>Materials Adjustable lamp housing: Cast aluminum. Driver enclosure: Cast aluminum with top cover plate. Lens: Clear, tempered glass in captive cast aluminum gasketed frame. Mounting stem: Aluminum tubing.</p> <p>Electrical Components Light engine: Aluminum core PCB each with 4 Luxeon M emitters and Ledil Strata - SQ optics. Driver: High efficiency, <20% THD, >90% PF</p>	<p>The 6014LED luminaire is designed for pendant mounting. The rectangular canopy is designed to mount over a recessed 4" octagon j-box. The stem is 1-1/8" steel tubing with an offset to accommodate the luminaire center of gravity. The canopy is fastened to the ceiling separately from the j-box. Ceiling strength needs to be substantial enough to handle the weight (70 lbs.).</p>	<p>The 6014LED optical system is optimized to provide an asymmetric indirect distribution. Head is adjustable (+/- 15°) to customize aiming upon installation, if required.</p>	<p>The 6014LED is normally provided for indoor dry or damp locations to UL and CSA standards but, if ordered, can be made suitable for wet locations to UL and CSA standards. (LOC 2, covered ceiling)</p> <p>All units have a protective, tempered, glass shield to protect the LED compartment. The wet location units are totally sealed for wet location usage (IP65).</p> <p>LEDs are rated for 50,000 hour life with lumen maintenance > 70% (L70).</p>



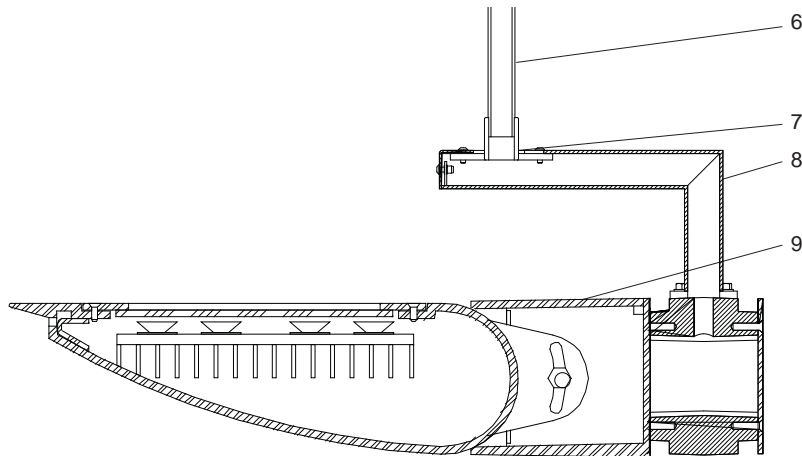
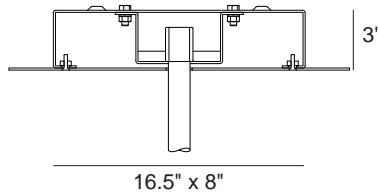
Cut-off Visor Option



+/- 15° Field Adjustable Head



Ceiling Canopy
Assembly



Streamline Indirect 6014LED Detailed Product Description

- | | | | |
|---|---|---|--|
| 1 | Adjustable Lamp Housing (+/-15°) - Cast Aluminum | 6 | Mounting Stem - 1 1/8" Tubing |
| 2 | Driver Enclosure - Cast Aluminum with Top Cover Plate | 7 | Pendant Mount Bracket - Cast Aluminum |
| 3 | Enclosed LED Glass Frame and Heat Sink Assembly | 8 | Cantilever Support Arm - Cast Aluminum |
| 4 | Driver | 9 | Housing Assembly |
| 5 | LED Boards 4 x Luxeon 'M' Emitters Each | | |