

# Streamline 6016LED Midi Twin Indirect Pendant

INTERIOR

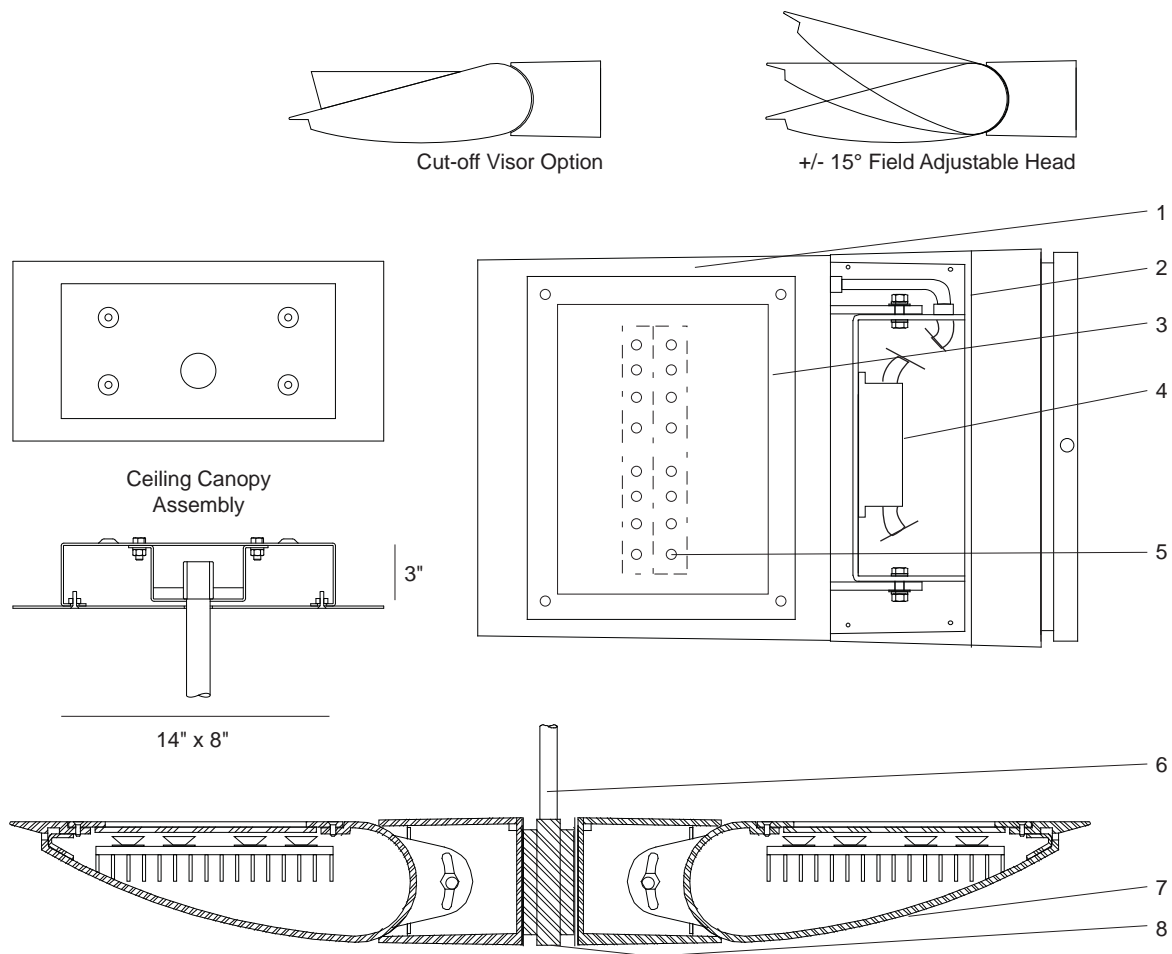
MODEL	WATTS	COLOR TEMPERATURE	VOLT	OPTIONS	COLOR
6016	134L <i>2 x 134 watts 2 x 12,400 lumens<sup>1</sup></i>	3K <i>3000K</i>	120*	P( ) <i>pendant length</i>	WT <i>white texture</i>
		35K <i>3500K</i>	208	WL <i>wet location</i>	BT <i>black texture</i>
	101L <i>2 x 101 watts 2 x 9,300 lumens<sup>1</sup></i>	4K <i>4000K</i>	240	CV <i>cut off visor for downward tilt</i>	SM <i>silver metallic</i>
		5K <i>5000K</i>	277	DIM <i>dimming driver 0 - 10V control</i>	AN <i>aluminum natural</i>
			347+	NAT <i>naturium construction</i>	BZ <i>bronze</i>
					GM <i>gunmetal</i>
					WS <i>white satin</i>
					BM <i>black matte</i>
					RAL <i>specify no.</i>

\*Standard configuration unless otherwise specified <sup>1</sup>Delivered lumens (4000K) +Consult factory

SAMPLE CATALOG NUMBER: 6016 - 134L - 4K - 120 - P24 - WT

Using this catalog number would order 1 model 6016 midi twin indirect ceiling wash pendant luminaire with 134 watt, 4000K light engines wired to 120 volts with a pendant length of 24" and painted white texture polyester powder coat.

CONSTRUCTION	MOUNTING	OPTICAL	PROTECTION
<p><b>Materials</b> Adjustable lamp housing: Cast aluminum. Driver enclosure: Cast aluminum with top cover plate. Lens: Clear, tempered glass in captive cast aluminum gasketed frame. Mounting stem: Aluminum tubing.</p> <p><b>Electrical Components</b> Light engine: Aluminum core PCB each with 4 Luxeon M emitters and Ledil Strata - SQ optics. Driver: High efficiency, &lt;20% THD, &gt;90% PF</p>	<p>The 6016LED luminaire is designed for pendant mounting in a twin, back to back configuration. Luminaire heads are coupled to a cast aluminum plate that also terminates the 1-1/8" steel stem. A decorative, rectangular ceiling canopy mounts over a 4" octagon, recessed j-box. Mounting holes are provided to attach to ceiling. Stem length varies. Ceiling strength must be sufficient to support 125 lbs.</p>	<p>The 6016LED optical system is optimized to provide an asymmetric indirect distribution. Head is adjustable (+/- 15°) to customize aiming upon installation, if required.</p>	<p>The 6016LED is normally provided for indoor dry or damp locations to UL and CSA standards but, if ordered, can be made suitable for wet locations to UL and CSA standards. (LOC 2, covered ceiling)</p> <p>All units have a protective, tempered, glass shield to protect the LED compartment. The wet location units are totally sealed for wet location usage (IP65).</p> <p>LEDs are rated for 50,000 hour life with lumen maintenance &gt; 70% (L70).</p>



## Streamline Indirect 6016LED Detailed Product Description

- |   |   |   |                                       |
|---|---|---|---------------------------------------|
| 1 | Adjustable Lamp Housing (+/-15°) - Cast Aluminum      | 6 | Mounting Stem - 1 1/8" Tubing         |
| 2 | Driver Enclosure - Cast Aluminum with Top Cover Plate | 7 | Housing Assembly                      |
| 3 | Enclosed LED Glass Frame and Heat Sink Assembly       | 8 | Pendant Mount Bracket - Cast Aluminum |
| 4 | Driver  |   |                                       |
| 5 | LED Boards 4 x Luxeon 'M' Emitters Each               |   |                                       |