

Streamline 6017LED Maxi Twin Indirect Pendant

INTERIOR

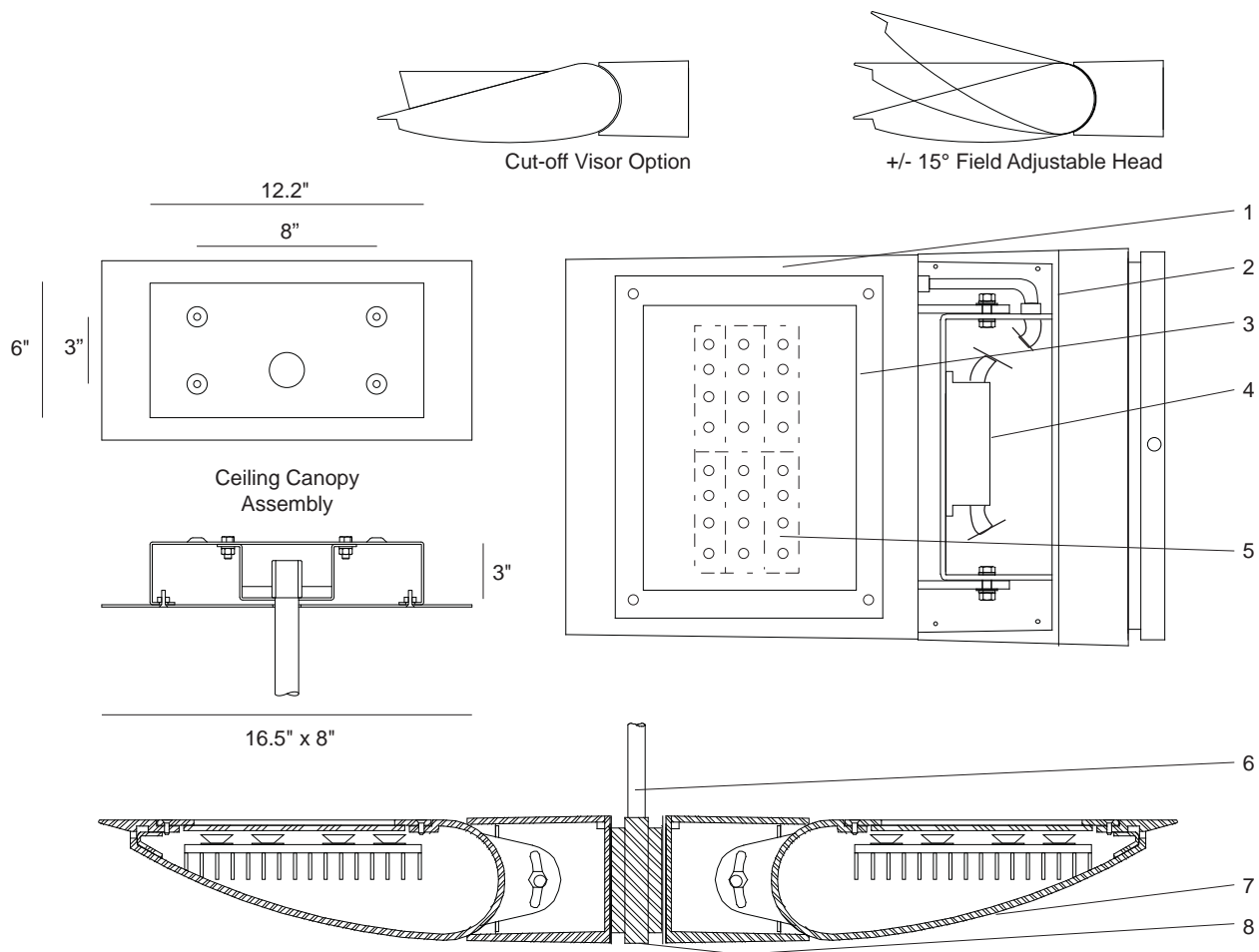
MODEL	WATTS	COLOR TEMPERATURE	VOLT	OPTIONS	COLOR
6017	200L <i>2 x 200 watts</i> <i>2 x 18,600 lumens¹</i>	3K <i>3000K</i>	120*	P(L") <i>pendant length</i>	WT <i>white texture</i>
	167L <i>2 x 167 watts</i> <i>2 x 15,500 lumens¹</i>	35K <i>3500K</i>	208	WL <i>wet location</i>	BT <i>black texture</i>
		4K <i>4000K</i>	240	CV <i>cut-off visor for downward tilt</i>	SM <i>silver metallic</i>
	134L <i>2 x 134 watts</i> <i>2 x 12,400 lumens¹</i>	5K <i>5000K</i>	277	DIM <i>0 - 10 volt dimmable driver</i>	AN <i>aluminum natural</i>
			347+	NAT <i>natatorium construction</i>	BZ <i>bronze</i>
					GM <i>gunmetal</i>
					WS <i>white satin</i>
					BM <i>black matte</i>
					RAL <i>specify no.</i>

*Standard configuration unless otherwise specified ¹Delivered lumens (4000K) +Consult factory

SAMPLE CATALOG NUMBER: 6017 - 200L - 4K - 120 - P24 - WT

Using this catalog number would order 1 model 6017 maxi twin indirect ceiling wash pendant luminaire with a 200 watt, 4000K light engine wired to 120 volts in each luminaire head with a pendant length of 24" and painted white texture polyester powder coat.

CONSTRUCTION	MOUNTING	OPTICAL	PROTECTION
<p>Materials Adjustable lamp housing: Cast aluminum. Driver enclosure: Cast aluminum with top cover plate. Lens: Clear, tempered glass in captive cast aluminum gasketed frame. Mounting stem: Aluminum tubing.</p> <p>Electrical Components Light engine: Aluminum core PCB each with 4 Luxeon M emitters and Ledil Strata - SQ optics. Driver: High efficiency, <20% THD, >90% PF</p>	<p>The 6017LED luminaire is designed for pendant mounting in a twin, back to back configuration. Luminaire heads are coupled to a cast aluminum plate that also terminates the 1-1/8" stem. A decorative, rectangular ceiling canopy mounts over a 4" octagon, recessed j-box. Mounting holes are provided to attach to ceiling. Stem length varies. Ceiling strength must be sufficient to support 125 lbs.</p>	<p>The 6017LED optical system is optimized to provide an asymmetric indirect distribution. Head is adjustable (+/- 15°) to customize aiming upon installation, if required.</p>	<p>The 6017LED is normally provided for indoor dry or damp locations to UL and CSA standards but, if ordered, can be made suitable for wet locations to UL and CSA standards. (LOC 2, covered ceiling)</p> <p>All units have a protective, tempered, glass shield to protect the LED compartment. The wet location units are totally sealed for wet location usage (IP65).</p> <p>LEDs are rated for 50,000 hour life with lumen maintenance > 70% (L70).</p>



Streamline Indirect 6017LED Detailed Product Description

- | | | | |
|---|---|---|---------------------------------------|
| 1 | Adjustable Lamp Housing (+/-15°) - Cast Aluminum | 6 | Mounting Stem - 1 1/8" Tubing |
| 2 | Driver Enclosure - Cast Aluminum with Top Cover Plate | 7 | Housing Assembly |
| 3 | Enclosed LED Glass Frame and Heat Sink Assembly | 8 | Pendant Mount Bracket - Cast Aluminum |
| 4 | Driver | | |
| 5 | LED Boards 4 x Luxeon 'M' Emitters Each | | |