

# Streamline 6019LED Maxi Single Post Top

EXTERIOR

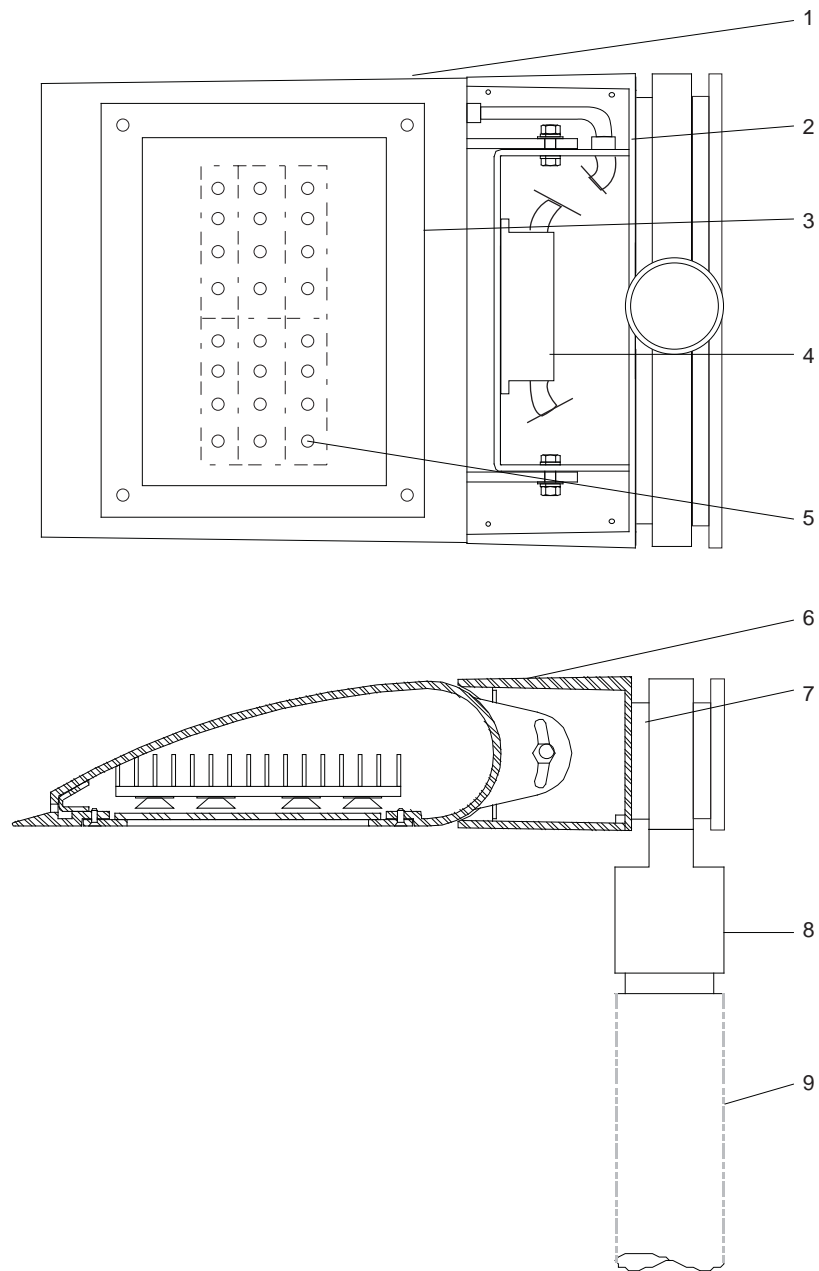
MODEL	WATTS		COLOR TEMPERATURE		VOLT	DISTRIBUTION		OPTIONS		COLOR	
6019	200L	1 x 200 watts 18,600 lumens¹	3K	3000K	120*	T2	type II distribution	DIM	0 - 10 volt dimmable driver	WT	white texture
			35K	3500K	208	T3	type III distribution			BT	black texture
	167L	1 x 167 watts 15,500 lumens¹	4K	4000K	240	T4	type IV distribution	SM	silver metallic		
			134L	1 x 134 watts 12,400 lumens¹	5K	5000K	277	T5	type V distribution	AN	aluminum natural
							347+			BZ	bronze
									GM	gunmetal	
									WS	white satin	
									BM	black matte	
										RAL	specify no.

\*Standard configuration unless otherwise specified +Consult factory <sup>1</sup>Delivered lumens (4000K)

SAMPLE CATALOG NUMBER: 6019 - 200L - 4K - 120 - T2 - WT

Using this catalog number would order 1 model 6019 maxi single post top luminaire with a 200 watt, 4000K light engine wired to 120 volts, with a type II distribution, painted white texture polyester powder coat.

CONSTRUCTION	MOUNTING	OPTICAL	PROTECTION
<p>Materials</p> <p>Adjustable lamp housing: Cast aluminum. Driver enclosure: Cast aluminum with top cover plate. Light engine enclosure: Cast aluminum sealed to lens frame. Lens: Clear tempered glass in cast aluminum gasketed frame.</p> <p>Electrical Components</p> <p>Light engine: Aluminum core PCB each with 4 Luxeon 'M' emitters and Lediil Strata - SQ optics. Driver: High efficiency, &lt;20% THD, &gt;90% PF</p>	<p>The 6019LED luminaire is designed for pole top mounting. A cast aluminum pole/luminaire transition is provided to adapt to a 4" diameter pole or tenon. A heavy gauge mounting plate attached to the transition carries the luminaire weight and allows it to be locked to the transition with stainless steel set screws.</p>	<p>The 6019LED optical system is type II, III, IV or V with a full cutoff classification.</p>	<p>The 6019LED is listed for use in wet locations to UL and CSA standards. Windloading EPA = 1.14 sq. ft.</p> <p>LEDs are rated for 50,000 hour life with lumen maintenance &gt; 70% (L70).</p>



## Streamline Direct 6019LED Detailed Product Description

- |   |   |   |   |
|---|---|---|---|
| 1 | LED Housing - Cast Aluminum                           | 6 | Housing Assembly  |
| 2 | Driver Enclosure - Cast Aluminum with Top Cover Plate | 7 | Pole/Luminaire Transition - Cast Aluminum   |
| 3 | Enclosed LED Glass Frame and Heat Sink Assembly       | 8 | Post Top Fitter - Cast Aluminum   |
| 4 | Driver  | 9 | 4" Diameter Pole or 5" Diameter Pole with 4" Diameter x 5" Long Tenon (By Others) |
| 5 | LED Boards 4 x Luxeon 'M' Emitters Each               |   |   |