

Streamline 6020LED Midi Twin Post Top

EXTERIOR

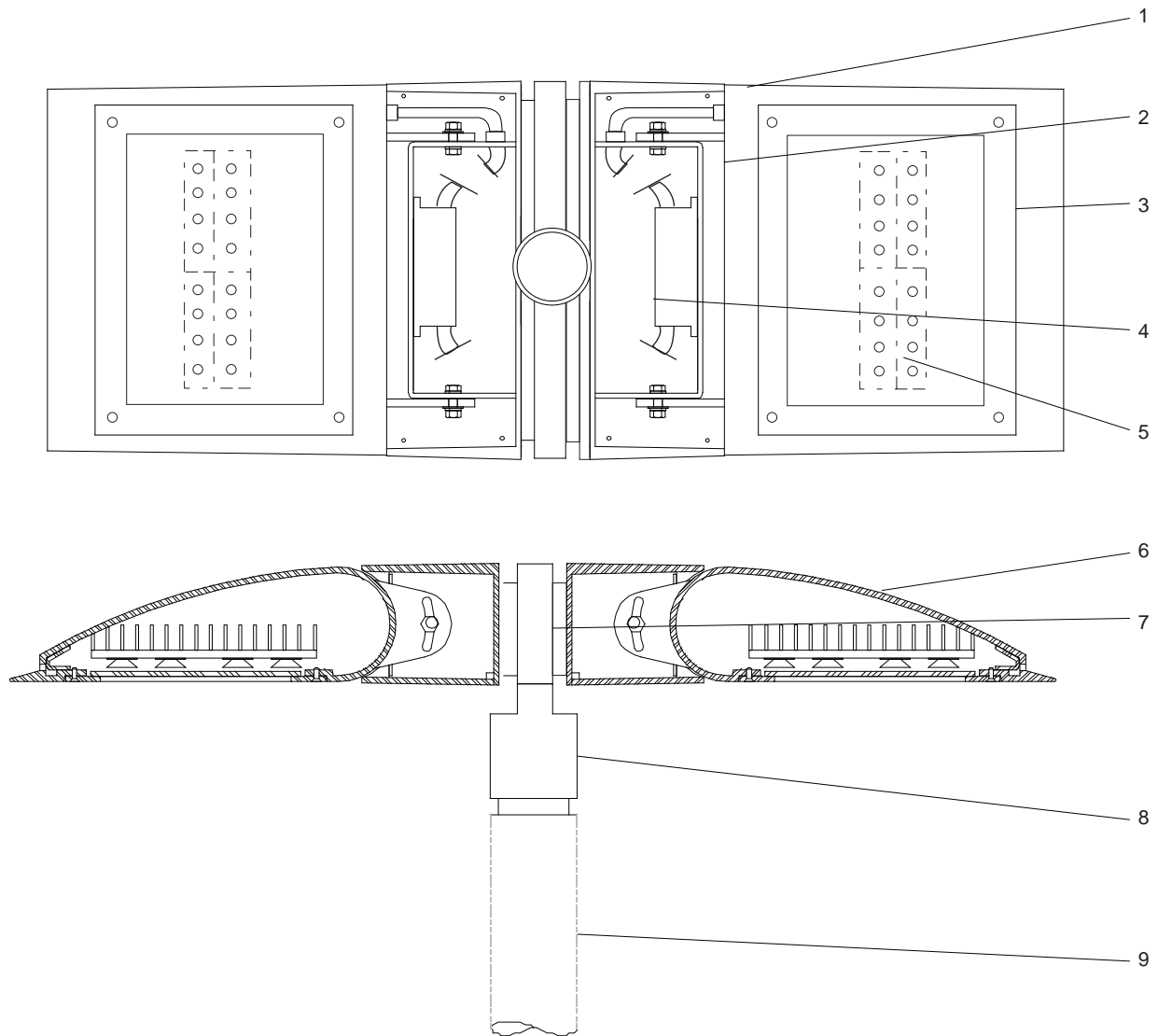
MODEL	WATTS	COLOR TEMPERATURE	VOLT	DISTRIBUTION	OPTIONS	COLOR
6020	134L 2 x 134 watts 2 x 12,400 lumens ¹	3K 3000K	120*	T2 type II distribution	DIM 0 - 10 volt dimmable driver	WT white texture
	101L 2 x 101 watts 2 x 9,300 lumens ¹	35K 3500K	208	T3 type III distribution		BT black texture
		4K 4000K	240	T4 type IV distribution		SM silver metallic
		5K 5000K	277	T5 type V distribution		AN aluminum natural
			347+			BZ bronze
						GM gunmetal
						WS white satin
						BM black matte
						RAL specify no.

*Standard configuration unless otherwise specified +Consult factory ¹Delivered lumens (4000K)

SAMPLE CATALOG NUMBER: 6020 - 134L - 4K - 120 - T2 - WT

Using this catalog number would order 1 model 6020 midi twin post top luminaire with a 134 watt, 4000K light engine wired to 120 volts with type II distribution in each luminaire head, painted white texture polyester powder coat.

CONSTRUCTION	MOUNTING	OPTICAL	PROTECTION
<p>Materials Adjustable lamp housing: Cast aluminum. Driver enclosure: Cast aluminum with top cover plate. Light engine enclosure: Cast aluminum sealed to lens frame. Lens: Clear tempered glass in cast aluminum gasketed frame.</p> <p>Electrical Components Light engine: Aluminum core PCB each with 4 Luxeon 'M' emitters and Ledil Strata - SQ optics. Driver: High efficiency, 20% THD, >90% PF</p>	<p>The 6020LED luminaire is designed for pole top mounting. A cast aluminum pole/luminaire transition is provided to adapt to a 3" diameter tenon or pole. A heavy gauge mounting plate attached to the transition carries the luminaire weight and allows it to be locked to the transition with stainless steel set screws.</p>	<p>The 6020LED optical system is type II, III, IV or V with a full cutoff classification.</p>	<p>The 6020LED is listed for use in wet locations to UL and CSA standards. Windloading EPA = 1.25 sq. ft.</p> <p>LEDs are rated for 50,000 hour life with lumen maintenance > 70% (L70).</p>



Streamline Direct 6020LED Detailed Product Description

- | | | | |
|---|---|---|---|
| 1 | LED Housing - Cast Aluminum | 6 | Housing Assembly |
| 2 | Driver Enclosure - Cast Aluminum with Top Cover Plate | 7 | Pole/Luminaire Transition - Cast Aluminum |
| 3 | Enclosed LED Glass Frame and Heat Sink Assembly | 8 | Post Top Fitter - Cast Aluminum |
| 4 | Driver | 9 | 3" Diameter Pole or 4" Diameter Pole with 3" Diameter x 4.5" Long Tenon (By Others) |
| 5 | LED Boards 4 x Luxeon 'M' Emitters Each | | |