

Streamline 6021LED Maxi Twin Post Top

EXTERIOR

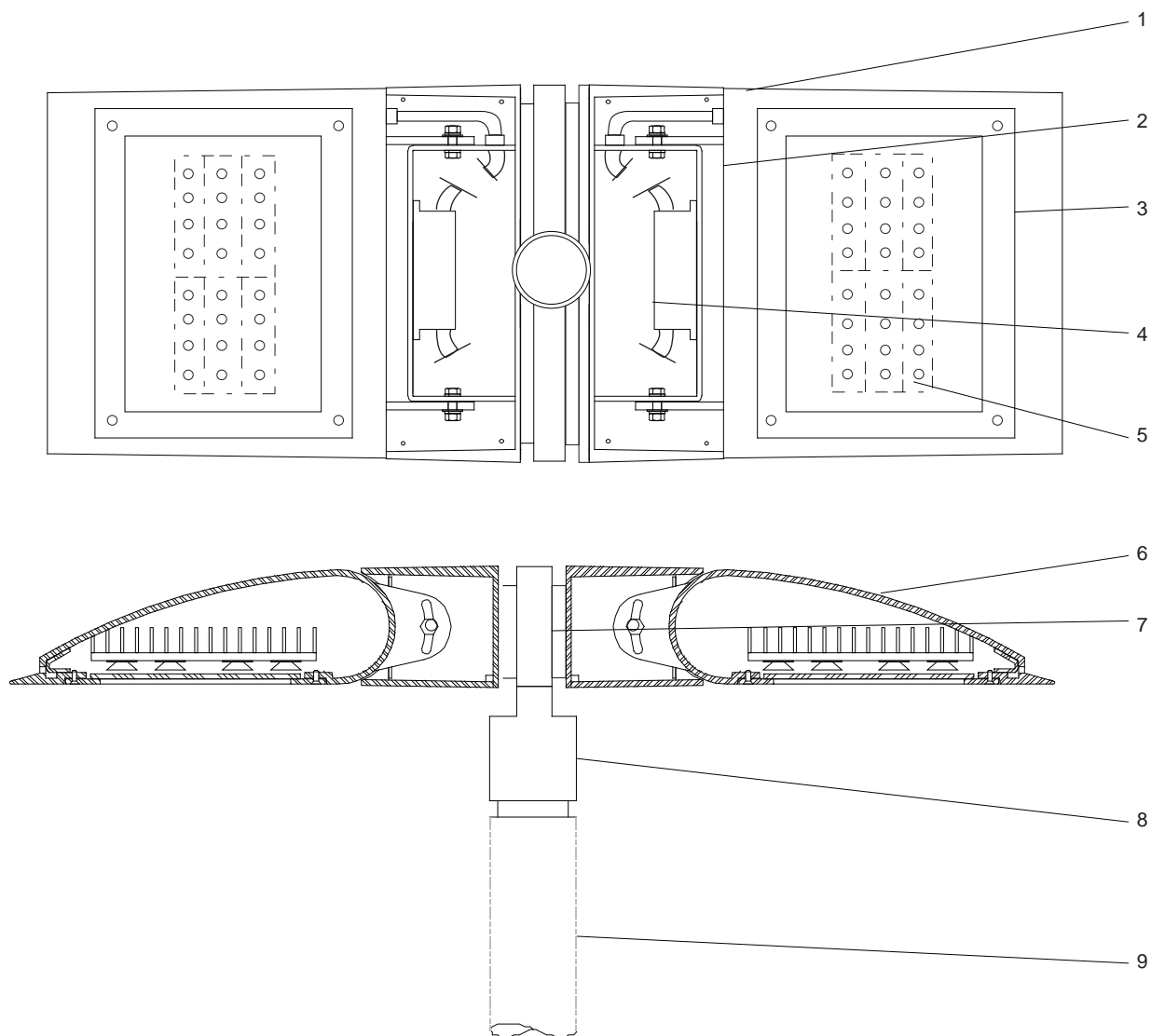
MODEL	WATTS	COLOR TEMPERATURE	VOLT	DISTRIBUTION	OPTIONS	COLOR
6021	200L <i>2 x 200 watts</i> <i>2 x 18,600 lumens¹</i>	3K <i>3000K</i>	120*	T2 <i>type II distribution</i>	DIM <i>0 - 10 volt dimmable driver</i>	WT <i>white texture</i>
	167L <i>2 x 167 watts</i> <i>2 x 15,500 lumens¹</i>	35K <i>3500K</i>	208	T3 <i>type III distribution</i>		BT <i>black texture</i>
		4K <i>4000K</i>	240	T4 <i>type IV distribution</i>		SM <i>silver metallic</i>
	134L <i>2 x 134 watts</i> <i>2 x 12,400 lumens¹</i>	5K <i>5000K</i>	277	T5 <i>type V distribution</i>		AN <i>aluminum natural</i>
			347+			BZ <i>bronze</i>
						GM <i>gunmetal</i>
						WS <i>white satin</i>
						BM <i>black matte</i>
						RAL <i>specify no.</i>

*Standard configuration unless otherwise specified +Consult factory ¹Delivered lumens (4000K)

SAMPLE CATALOG NUMBER: 6021 - 200L - 24 - 4K - 120 - T2 - WT

Using this catalog number would order 1 model 6021 maxi twin post top luminaire with two 200 watt, 4000K light engine wired to 120 volts, with a type II distribution, painted white texture polyester powder coat.

CONSTRUCTION	MOUNTING	OPTICAL	PROTECTION
<p>Materials Adjustable lamp housing: Cast aluminum. Driver enclosure: Cast aluminum with top cover plate. Light engine enclosure: Cast aluminum sealed to lens frame. Lens: Clear tempered glass in cast aluminum gasketed frame.</p> <p>Electrical Components Light engine: Aluminum core PCB each with 4 Luxeon 'M' emitters and Ledil Strata - SQ optics. Driver: High efficiency, <20% THD, >90% PF</p>	<p>The 6021LED luminaire is designed for pole top mounting. A cast aluminum pole/luminaire transition is provided to adapt to a 4" diameter pole or tenon. A heavy gauge mounting plate attached to the transition carries the luminaire weight and allows it to be locked to the transition with stainless steel set screws.</p>	<p>The 6021LED optical system is type II, III, IV or V with a full cutoff classification.</p>	<p>The 6021LED is listed for use in wet locations to UL and CSA standards. Windloading EPA = 2.07 sq. ft.</p> <p>LEDs are rated for 50,000 hour life with lumen maintenance > 70% (L70).</p>



Streamline Direct 6021LED Detailed Product Description

- | | | | |
|---|---|---|---|
| 1 | LED Housing - Cast Aluminum | 6 | Housing Assembly |
| 2 | Driver Enclosure - Cast Aluminum with Top Cover Plate | 7 | Pole/Luminaire Transition - Cast Aluminum |
| 3 | Enclosed LED Glass Frame and Heat Sink Assembly | 8 | Post Top Fitter - Cast Aluminum |
| 4 | Driver | 9 | 4" Diameter Pole or 5" Diameter Pole with 4" Diameter x 5" Long Tenon (By Others) |
| 5 | LED Boards 4 x Luxeon 'M' Emitters Each | | |