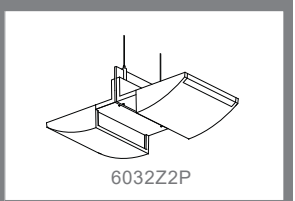
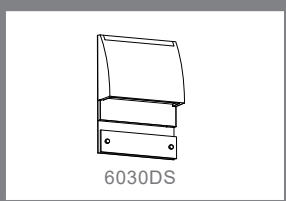
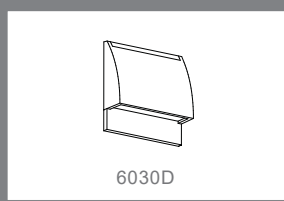
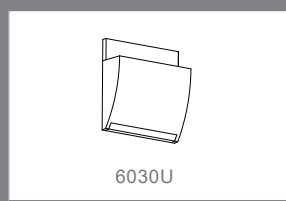
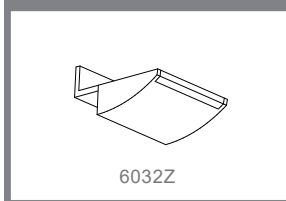
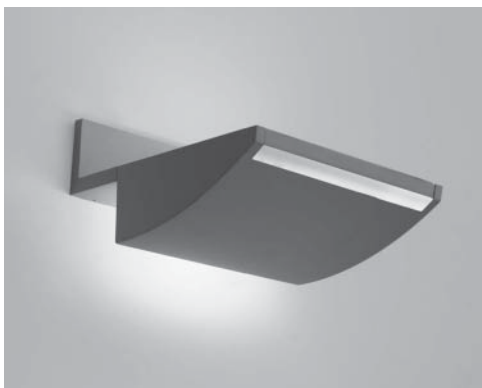
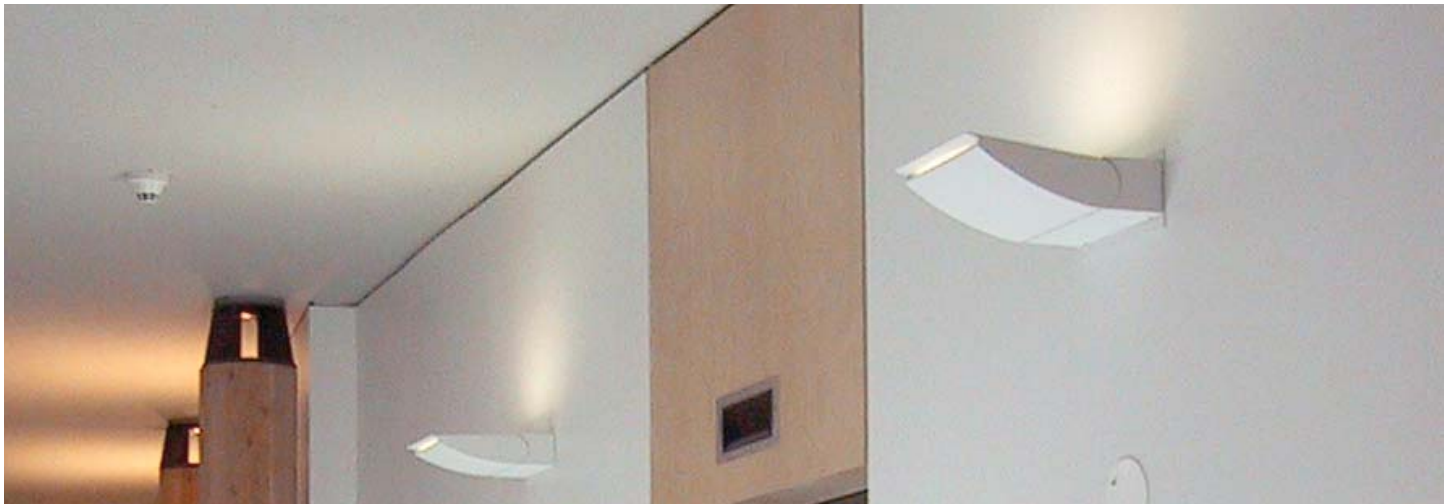


STREAMLINE

Architectural Sconce
Technical Manual





Mini Uplight/Backlight Sconce6032Z

LIGHTING CONCEPT

The Streamline family of architectural luminaires fulfill Rebelle's brand promise by providing Streamline family designs that compliment architectural intent without overpowering it. The sconce designs feature the same sensible design aesthetic as the original Streamline models. Clean, slim profiles with a light reveal accent maintain the Streamline family design principles. These sconces may be used as the feature

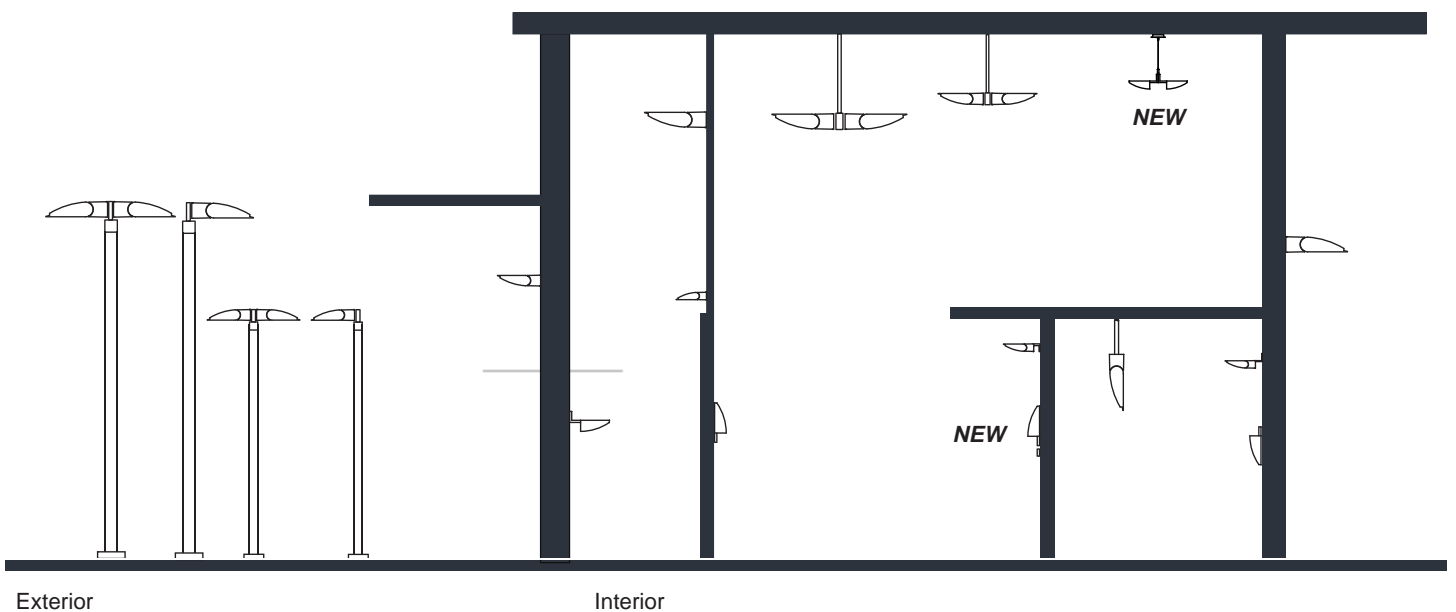
luminaire or as a luminaire that will blend quietly into the background. These die cast luminaires are a suitable scale for interior hallways, waiting rooms and entrance vestibules. Light output is controlled to provide illumination only for the task at hand. The sconce designs follow the Streamline family's design aesthetic and allow bold or subtle lighting results.

STREAMLINE

ASYMMETRIC LUMINAIRES

COORDINATED ARCHITECTURAL LIGHTING FOR INTERIOR APPLICATIONS

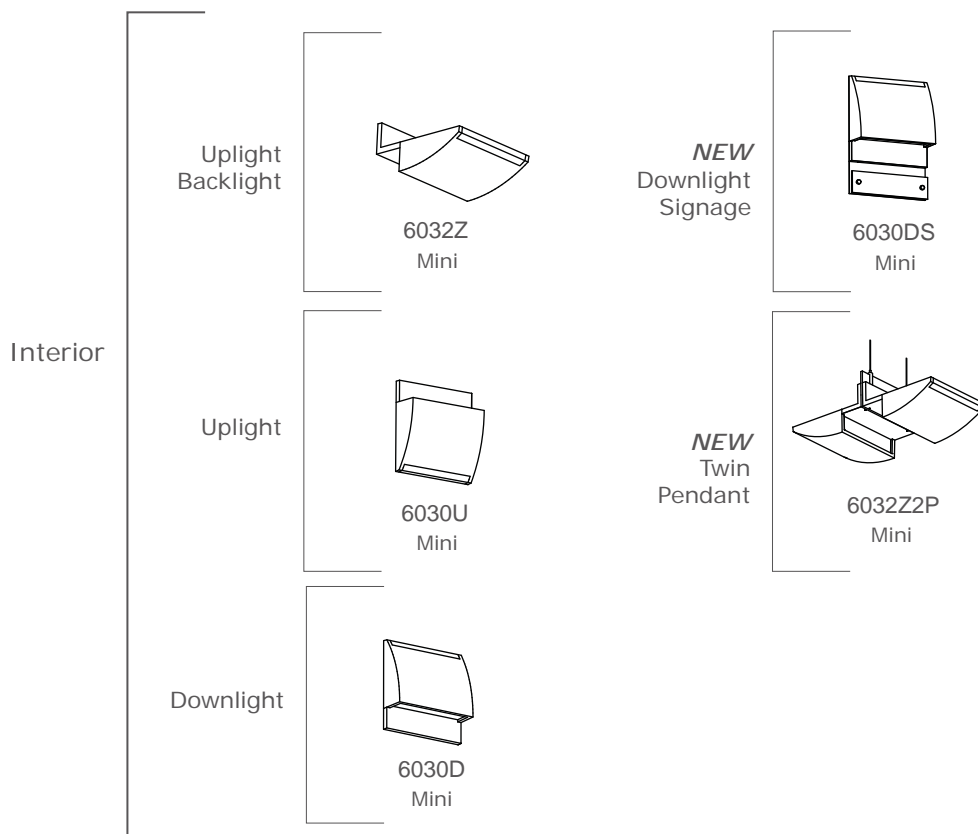
The Streamline sconce luminaires are ideal for use down hallways or other interiors where dramatic to unobtrusive illumination is required. These luminaires are suitable for use in health care institutions, schools or upscale hotels. With the ability to provide feature lighting or to blend unobtrusively into the backdrop these sconces make excellent additions for interior projects.



STREAMLINE

ASYMMETRIC LUMINAIRES

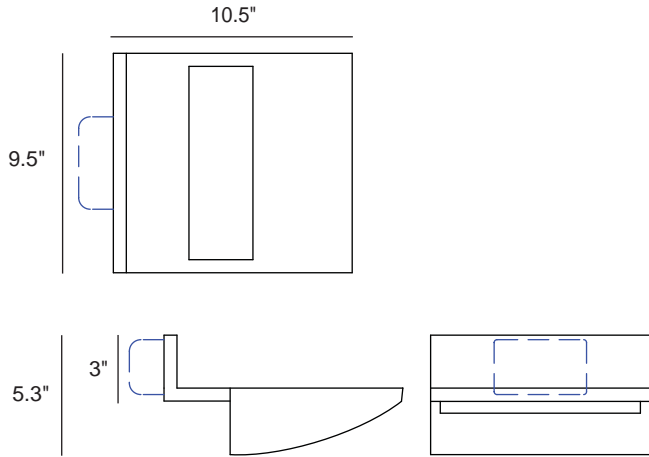
THE STREAMLINE SCONCE



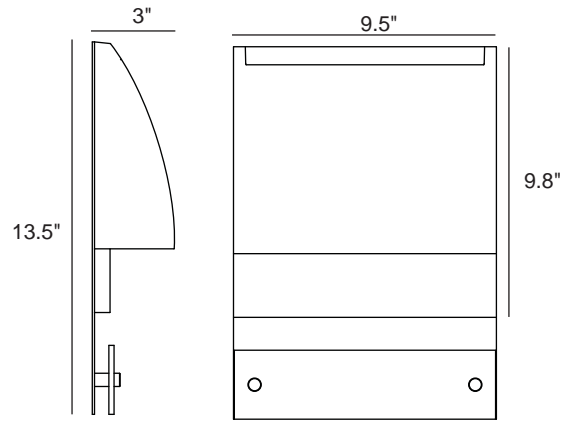
STREAMLINE

ASYMMETRIC LUMINAIRES

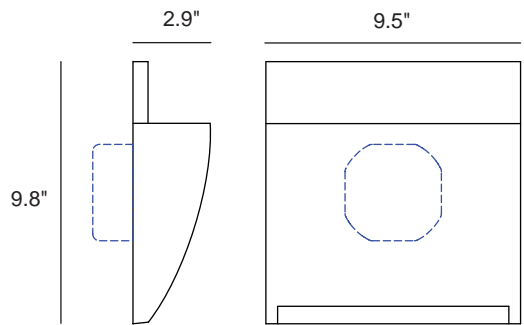
DIMENSIONS



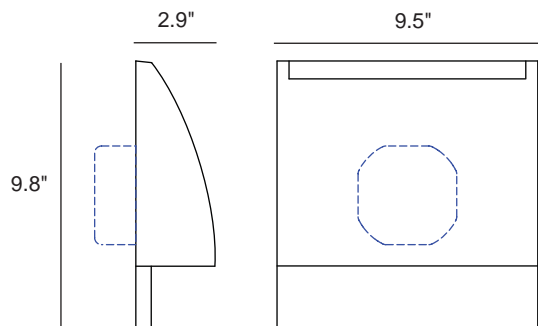
6032Z Uplight / Backlight Sconce



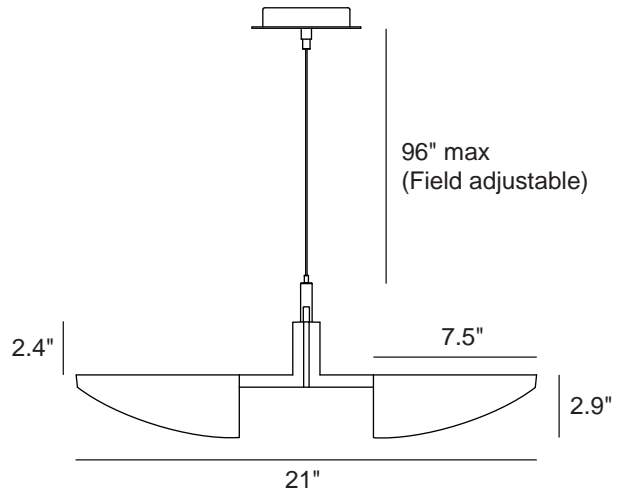
NEW
6030DS Signage Downlight Sconce



6030U Uplight Sconce



6030D Downlight Sconce

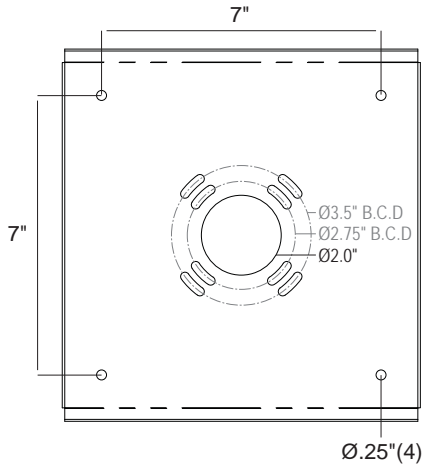


NEW
6032Z2P Uplight Twin Pendant

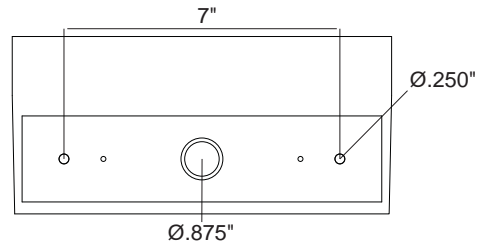
STREAMLINE

ASYMMETRIC LUMINAIRES

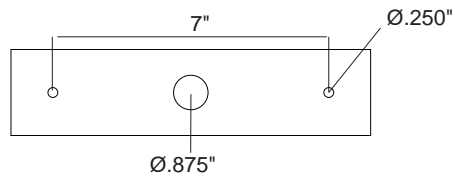
MOUNTING DETAILS



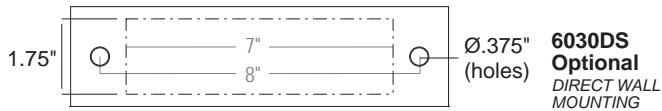
6030D / 6030U STANDARD MOUNTING



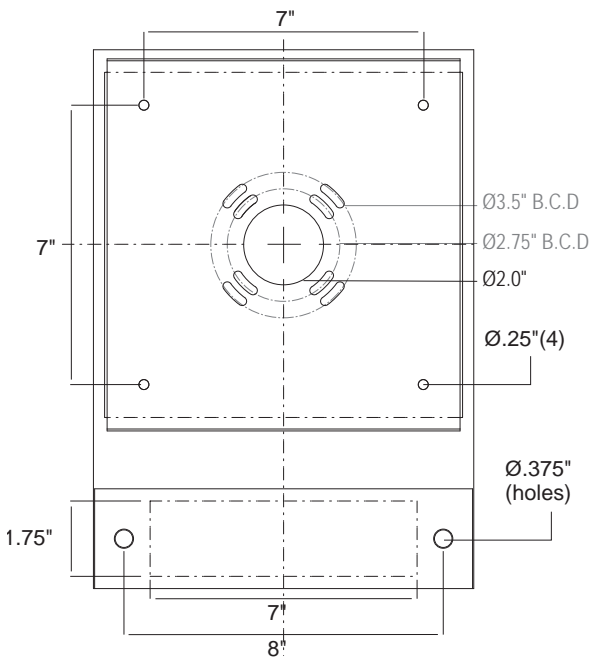
6032Z
Optional
4" RECESSED
OCTAGON J-BOX
COVER



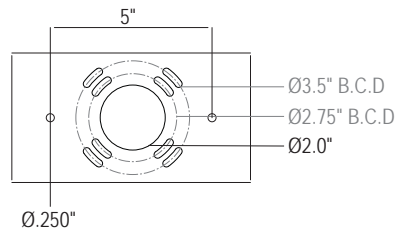
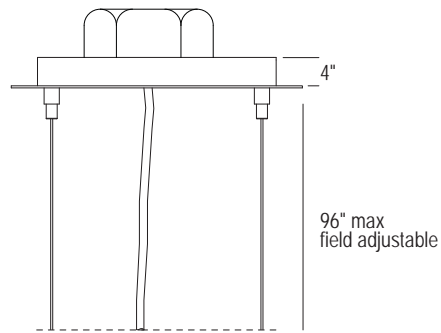
6032Z STANDARD MOUNTING



6030DS
Optional
DIRECT WALL
MOUNTING



6030DS STANDARD MOUNTING WITH PLATE

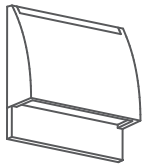


6032Z2ZP STANDARD MOUNTING FOR PENDANT

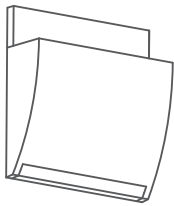
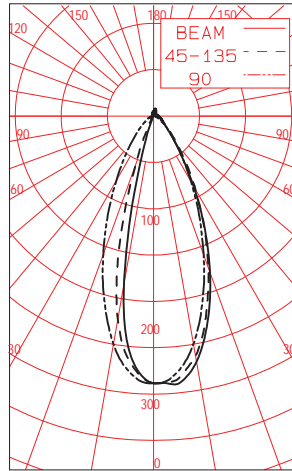
STREAMLINE

ASYMMETRIC LUMINAIRES

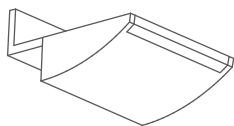
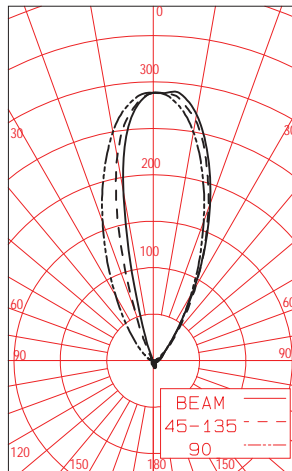
**CANDLE POWER
DISTRIBUTION CURVES**



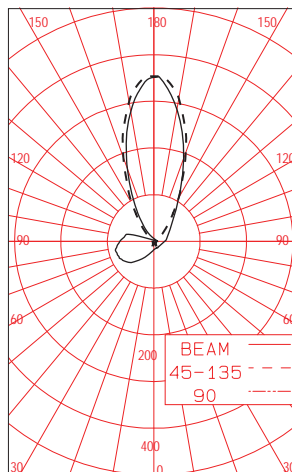
6030D



6030U



6032Z



STREAMLINE

ASYMMETRIC LUMINAIRES

PRODUCT FEATURE MATRIX SCONCES



Feature	Description
Construction	<i>Pressure Die Cast Aluminum</i>
Configurations	<i>Downlight ADA Uplight ADA Up/Back Light Signage Downlight Twin Pendant Uplight</i>
Driver	<i>Integral</i>
Light Sources	<i>LED</i>
Maximum Wattages	<i>LED - 8 x 1.2W</i>
Applications	<i>Indoor</i>
Labels	<i>cETL_{us}</i>
Paint	<i>Polyester Powder Coat (8 standard colors)</i>
Mounting Hardware	<i>Concealed from direct view</i>
Optical	<i>Prismatic, Tempered Glass</i>

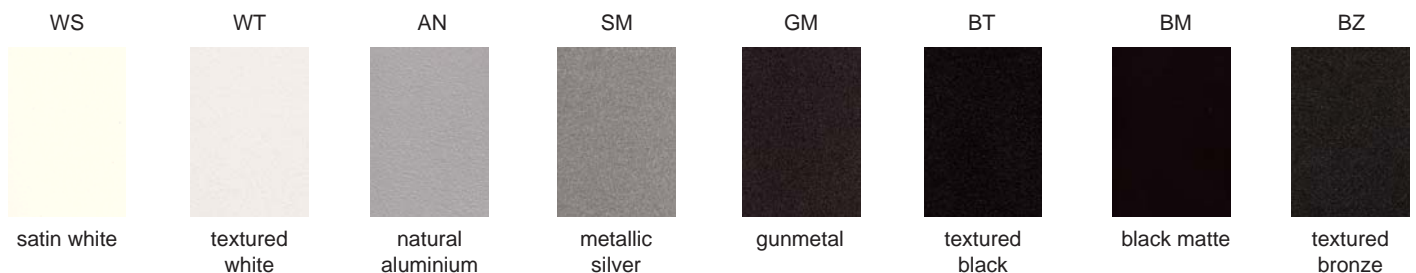
STREAMLINE

ASYMMETRIC LUMINAIRES

PAINT FINISHES

Powder Coat Paint Eight Standard Colors

The colors shown below are available for all Rebelle products and are suitable for interior and exterior use. Other colors are available to match RAL standards, or to match a specific color sample. Both RAL and color match are premium priced color options.



Surface Preparation and Application Process

Rebelle's powder painting process utilizes only polyester powders to ensure durability and permanence in outdoor applications. The process follows a documented quality assurance procedure to ensure the longevity of the finish in the most rigorous climates. All of Rebelle's luminaires go through a five-stage chemical pre-treatment prior to paint application in order to remove all surface impurities. To allow for a consistent, even coating on parts, all heavy cast aluminum and

welded assemblies are shot blasted to near white specifications prior to the five stage pre-treatment process. Following pre-treatment, all parts are coated using an electrostatic process to allow for a consistent, even coating on parts. After coating, parts are then transferred to cure in a high temperature oven. Paint production samples are continually checked to ensure they adhere to strictly controlled quality standards.

STREAMLINE

ASYMMETRIC LUMINAIRES

