

Sightlines 1635 Mini Step/Path Low Level Area Light

EXTERIOR

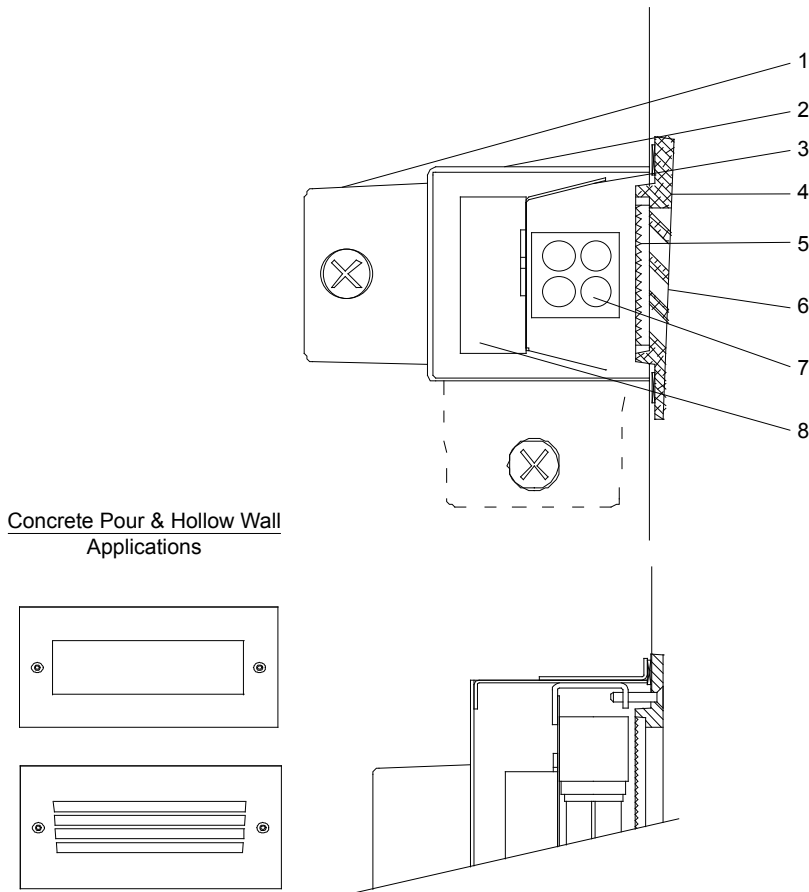
MODEL	LAMP	VOLT	FACEPLATE	J-BOX LOCATION	OPTIONS	COLOUR	
1635	113Q	<i>compact fluorescent</i> dtt 13w quad	120*	LV* <i>louvered</i>	RJB* <i>rear mount j-box</i>	FS <i>fuse kit</i>	WT <i>white texture</i>
	LED	<i>led</i> white 4 x 1.2w	208	PR <i>open</i>	BJB <i>bottom mount j-box</i>	RDR <i>remote driver(consult factory)</i>	BT <i>black texture</i>
		240					SM <i>silver metallic</i>
		277					AN <i>aluminum natural</i>
		347					BZ <i>bronze</i>
						GM <i>gunmetal</i>	
						WS <i>white satin</i>	
						BM <i>black matte</i>	
						RAL <i>specify no.</i>	

*Standard configuration unless otherwise specified

SAMPLE CATALOG NUMBER: 1635 - 113Q - 120 - LV - RJB - WT

Using this catalog number would order 1 model 1635 low level area light with a louvered face and a 1 x 13w compact fluorescent ballast wired to 120 volts with a standard rear mount junction box and a faceplate painted with white texture. Lamps by others.

CONSTRUCTION	MOUNTING	OPTICAL	PROTECTION
<p>Materials Faceplate: Cast aluminum. Housing: Zinc coated steel protected with high gloss white polyester powder coat. Reflector: High gloss white, formed steel. Lens: Open - Tempered, sealed prismatic (#73) glass. CF - Prismatic polycarbonate. Junction box: Gasketed, die cast aluminum, bottom mounted, suitable for through branch circuit conductors, suitable for 90°C. (3) - 1/2 NPT plugs, neoprene rubber gaskets.</p> <p>Ballast: CF - Electronic, 0°F start. LED driver 120 volt supply only.</p>	<p>The Sightlines 1635 series is designed for concrete pour installations and hollow wall construction in compact fluorescent versions. Units are non IC rated so the insulation, if any, must be kept 3" away from the housing and the housing should have 1/2" clearance all around except at the mounting points/surface. See Installation Instructions on the Rebelle website for further details. Conduits must be sealed against water entry into the fixture housing as outlined in the National Electric Code.</p>	<p>The Sightlines 1635 units are offered with louvered or open faceplates. A white polyester powder coated reflector directs output downward. Reflector is sealed behind faceplate assembly so that water and other contaminants are excluded.</p>	<p>The Sightlines 1635 series is listed for usage in wet locations within four feet of the ground to CSA and UL standards. The unit is not suitable to withstand pressure washing as it breaks down the gasket between the wall and the faceplate. Conduit must be sealed to exclude water from entering the housing. The housing is not intended for wet areas as the housing is only sealed internally to limit the entry of concrete.</p>



Concrete Pour & Hollow Wall Applications

Sightlines 1635 Detailed Product Description

- | | |
|--|---|
| <p>1 Junction Box - Suitable for 4 No. 12 AWG Through Branch Circuit Conductors Suitable for 90°C. (3) -1/2 NPT Plugs, Neoprene Rubber Gaskets, Back Mount Standard</p> <p>2 Recessed Housing - .063" Zinc Coated Steel Protected with White Polyester Powder Coat</p> <p>3 Reflector - .035" Steel with High Reflectance White Polyester Powder Coat</p> <p>4 Cast Aluminum Face Plate - Gasketed</p> <p>5 Lens - Prismatic Polycarbonate Standard or #73 Tempered Glass "PR" Option</p> | <p>6 (2) Stainless Steel, Cap Screw - Captive</p> <p>7 Ballast - CF - Electronic 0°F Start or LED Driver (120 Volt Supply Only)</p> <p>8 Lamps (By Others)</p> |
|--|---|