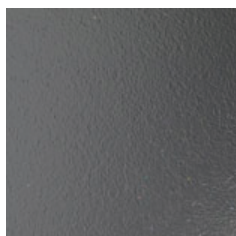


Powder Coat Paint Finish Selection

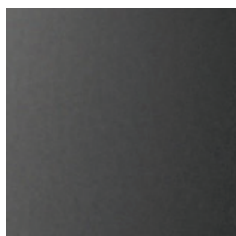
Eight Standard Colors



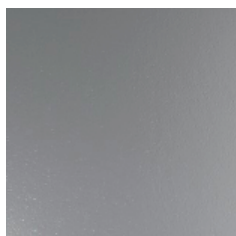
AN aluminum natural



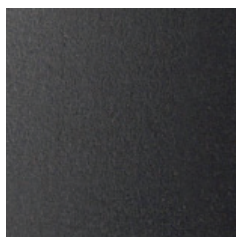
GM gunmetal



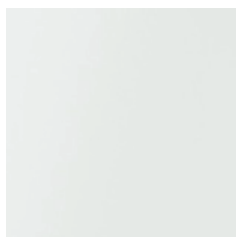
BM black matte



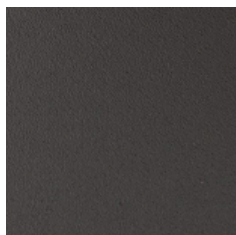
SM silver metallic



BT textured black



WS satin white



BZ textured bronze



WT textured white

REBELLE Architectural Lighting offers a full range of eight polyester powder coat finishes. RAL and custom color match finishes are also offered.

REBELLE'S powder coating process utilizes only the most durable polyester powders to ensure durability and permanence in outdoor applications.

The powder coating process follows a documented Quality Assurance Procedure to ensure the longevity of the finish in the most rigorous of climates.

All REBELLE luminaires go through a multi-stage chemical treatment prior to paint application to remove all surface impurities. This process ensures proper adhesion of powder to the surface.

Paint production is continually checked against strictly regulated quality control standards.

Please note that due to technical constraints color representation may not be completely accurate. Actual paint samples are available through a REBELLE sales representative in your area.

RAL colors and custom color matching is also available. Please contact your REBELLE sales representative for information concerning non standard color selection.

Additional information about our available paint finishes can be obtained by a REBELLE sales representative or through our website.

rebellemighting.com