

IMPORTANT

Disconnect power before installing fixtures. Read instructions before starting work.

THIS PRODUCT MUST BE INSTALLED IN ACCORDANCE WITH THE APPLICABLE INSTALLATION CODE BY A PERSON FAMILIAR WITH THE CONSTRUCTION AND OPERATION OF THE PRODUCT AND THE HAZARDS INVOLVED.

CE PRODUIT DOIT ÊTRE INSTALLÉ SELON LE CODE D'INSTALLATION PERTINENT, PAR UNE PERSONNE QUI CONNAÎT BIEN LE PRODUIT ET SON FONCTIONNEMENT AINSI QUE LES RISQUES INHÉRENTS.

Sightlines 2400SS Series

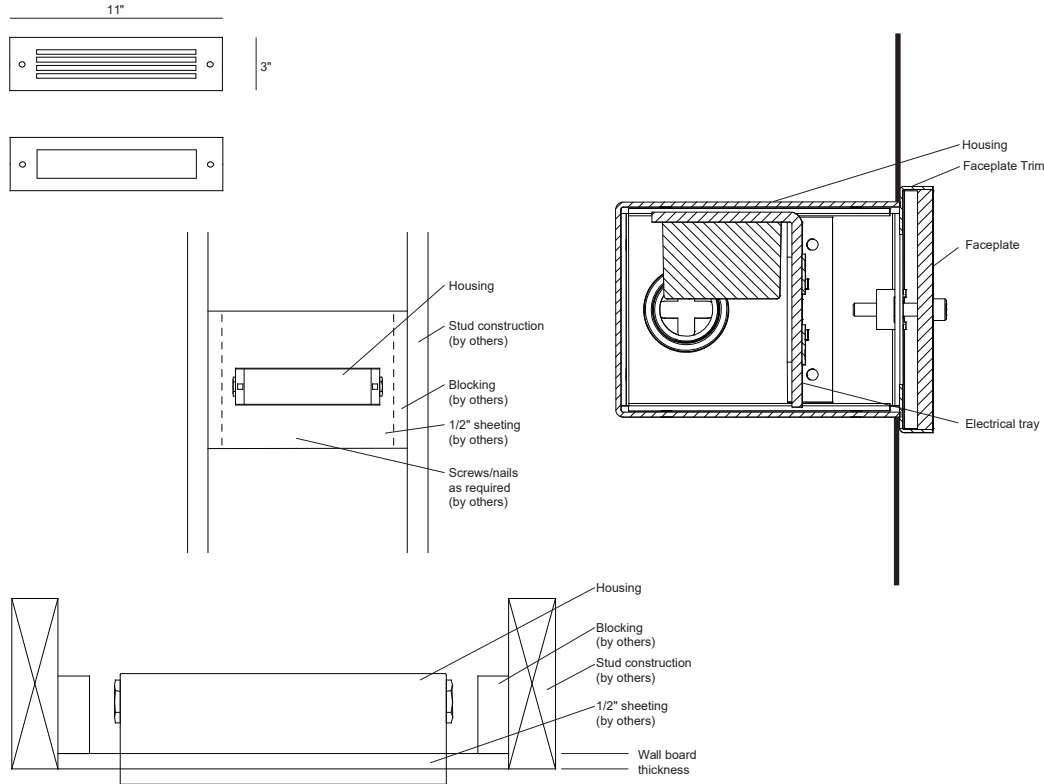
HOUSING INSTALLATION - CONCRETE POUR

- 1 Remove housing from shipping carton. Lay out center line of luminaire positions on concrete form. (Fig.1)
- 2 Position template (provided) over marked center line luminaire spacings (make sure template is level) drill 1/4" holes through form. (Fig.1)
- 3 Install housing on concrete side of form using 3" long studs and wing nuts (provided) (fig.2) Check that unit is level.
- 4 If tile or other surface treatment is used the housing position must be adjusted to suit prior to pouring concrete.
- 5 Install 1/2" NPT conduit as required and pull supply circuit wires per applicable electrical codes.
- 6 Conduits must be sealed or plugged at all entry points as per applicable electrical code.
- 7 Remove wing nuts and studs after concrete is cured before the forms are stripped.

ELECTRICAL TRAY AND FACEPLATE INSTALLATION

- 1 Remove electrical tray from shipping carton.
- 2 Pull out supply wires and connect appropriate supply leads to electrical tray input.
- 3 Push all splices securely into box.
- 4 Install electrical tray with screws provided.
- 5 Remove faceplate assembly from shipping carton.
- 6 Before continuing mounting surface must be smooth and flat to allow gasket to make good contact for a water tight seal. For uneven surfaces use sealant between faceplate trim and wall surface.
- 7 Coat screws with white grease and install faceplate to housing anchor nuts.
- 8 Energize and test as required.

REV. 3.16.23



IMPORTANT

Disconnect power before installing fixtures. Read instructions before starting work.

THIS PRODUCT MUST BE INSTALLED IN ACCORDANCE WITH THE APPLICABLE INSTALLATION CODE BY A PERSON FAMILIAR WITH THE CONSTRUCTION AND OPERATION OF THE PRODUCT AND THE HAZARDS INVOLVED.

CE PRODUIT DOIT ÊTRE INSTALLÉ SELON LE CODE D'INSTALLATION PERTINENT, PAR UNE PERSONNE QUI CONNAÎT BIEN LE PRODUIT ET SON FONCTIONNEMENT AINSI QUE LES RISQUES INHÉRENTS.

Sightlines 2400SS Series

HOUSING INSTALLATION - HOLLOW WALL

- 1 Remove housing assembly from the shipping container.
- 2 Position housing in stud construction to keep at least 1/2" clearance around unit except at mounting points.
- 3 Make sure front edge of housing protrudes enough to be flush with finishing wall plane.
- 4 Install supply wiring per applicable code requirements.

Notes:

These units are listed/certified as non-ic recessed units. They are meant to be installed with 1/2" space around the recessed housing, except at point of mounting contact. Insulation must be kept away from housing by a minimum of 3 inches.

ELECTRICAL TRAY AND FACEPLATE INSTALLATION

- 1 Remove electrical tray from shipping carton.
- 2 Pull out supply wires and connect appropriate supply leads to electrical tray input.
- 3 Push all splices into j-box and re-attach cover plate.
- 4 Install electrical tray with screws provided.
- 5 Remove faceplate assembly from shipping carton.
- 6 Before continuing mounting surface must be smooth and flat to allow gasket to make good contact for a water tight seal. For uneven surfaces use sealant between faceplate trim and wall surface.
- 7 Coat screws with white grease and install faceplate to housing anchor nuts.
- 8 Install faceplate to housing anchor nuts.
- 9 Energize and test as required.