

NOTE
These installation instructions also apply to the head only "HO" 2868 version.

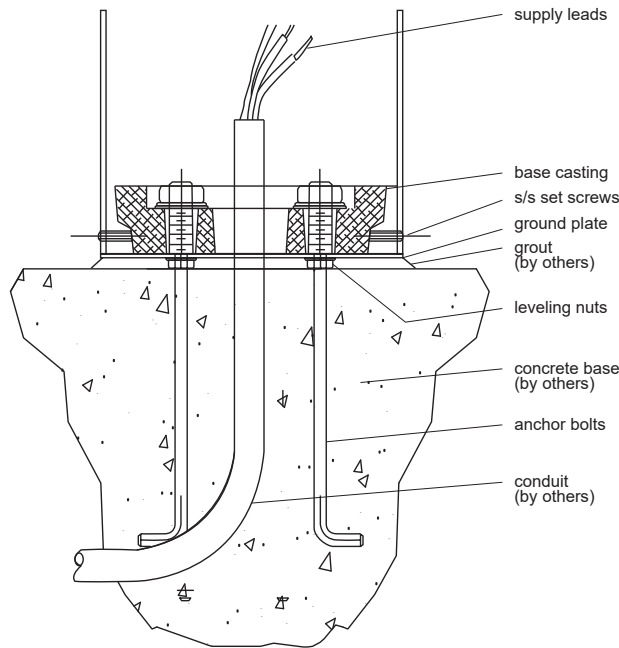


Figure 1
Base Assembly

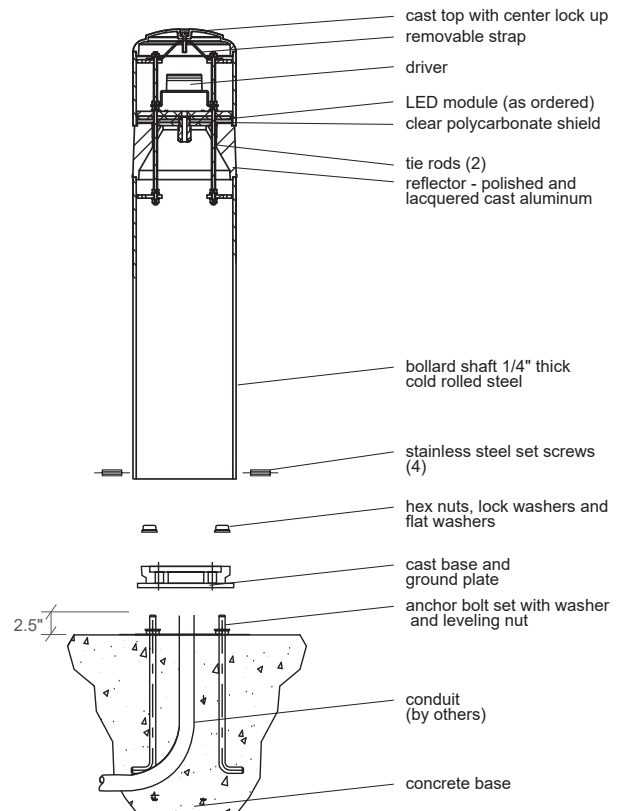


Figure 2
Bollard Assembly

IMPORTANT

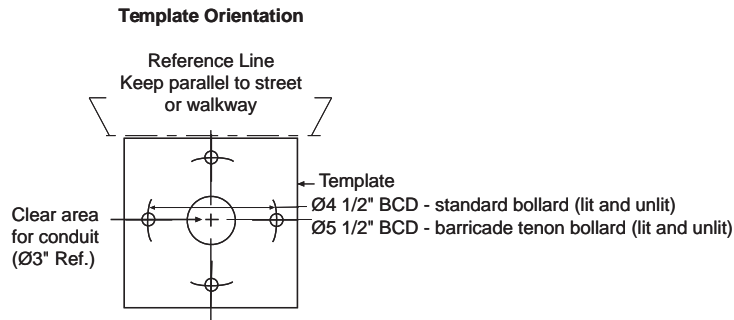
Disconnect power before installing fixtures. Read instructions before starting work. This product must be installed in accordance with the applicable installation code by a person familiar with the construction and operation of the product and the hazards involved.

Sightlines 2868 Series

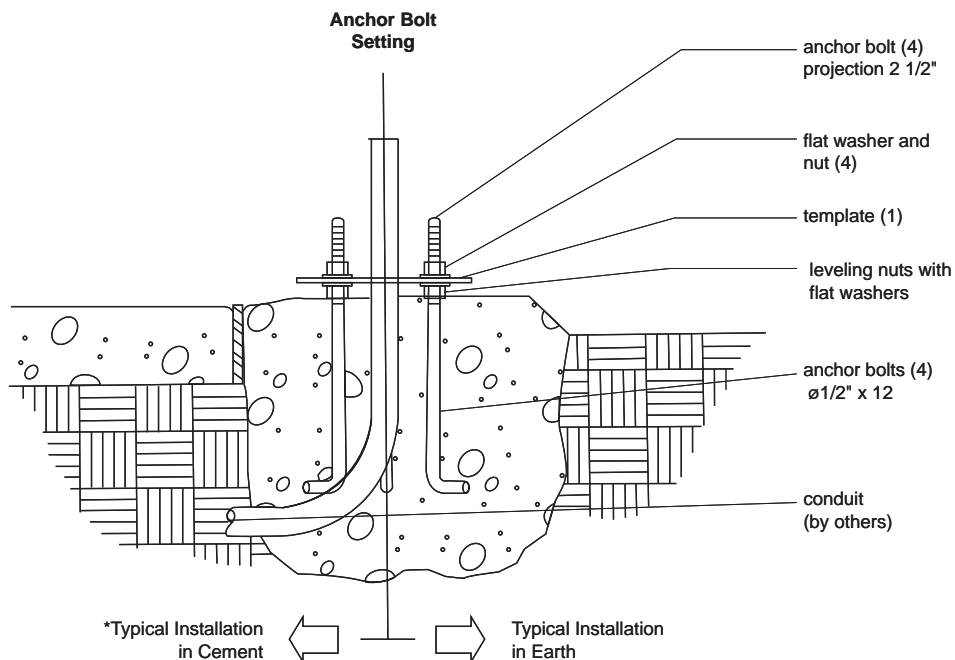
FIXTURE INSTALLATION INSTRUCTIONS

- 1 Anchor bolts should be set into concrete base as outlined in the Rebelle (2868) Anchor Bolt Installation Guide prior to bollard installation.
- 2 Install nuts followed by a flat washer on each anchor bolt.
- 3 Insert ground plate and base casting onto anchor bolts followed by a flat washer, lock washer and nut. Level the top edge of base casting by adjusting bottom nuts. Progressively tighten upper nuts evenly while keeping base casting level.
- 4 To install bollard lay bollard on horizontally on soft cloth next to the installed base casting with open end facing the base. Pull wires out of the bollard riser and make connections to field wires (green to ground, white to common, black to voltage). (Ensure internal connections and field supply are compatible prior to installation.)
- 5 Feed wires into riser and place bollard over the base casting.
- 6 Thread 1/4 - 20 set screws into riser and align with locking recess in base casting. Progressively and evenly tighten set screws to base casting.
- 7 Grout between ground plate and concrete base as required leaving a channel in the grout to allow for internal drainage.
- 8 This fixture is supplied with LED's as specified for the project and is self-contained.

REV. 09.25.20



NOTE
Vertical reflector uprights align
with anchor bolt holes and shaft
set screws into base casting.



*Concrete base is to be designed in accordance with local conditions (by others).
*Drainage channel through grout is required to drain bollard interior.

IMPORTANT

Disconnect power before installing fixtures. Read instructions before starting work. This product must be installed in accordance with the applicable installation code by a person familiar with the construction and operation of the product and the hazards involved.

Sightlines 2868 Series

ANCHOR BOLT INSTALLATION INSTRUCTION GUIDE

- 1 Anchor bolt sets are provided with each unit along with a setting template for every eight units.
- 2 Install the anchor bolts and template as shown and secure in position while concrete is poured around them.
- 3 Template is removed prior to installing bollard units onto anchor bolts.

REV. 11.2.17