

IMPORTANT

Disconnect power before installing fixtures. Read instructions before starting work. This product must be installed in accordance with the applicable installation code by a person familiar with the construction and operation of the product and the hazards involved.

Saturna 5009 Series

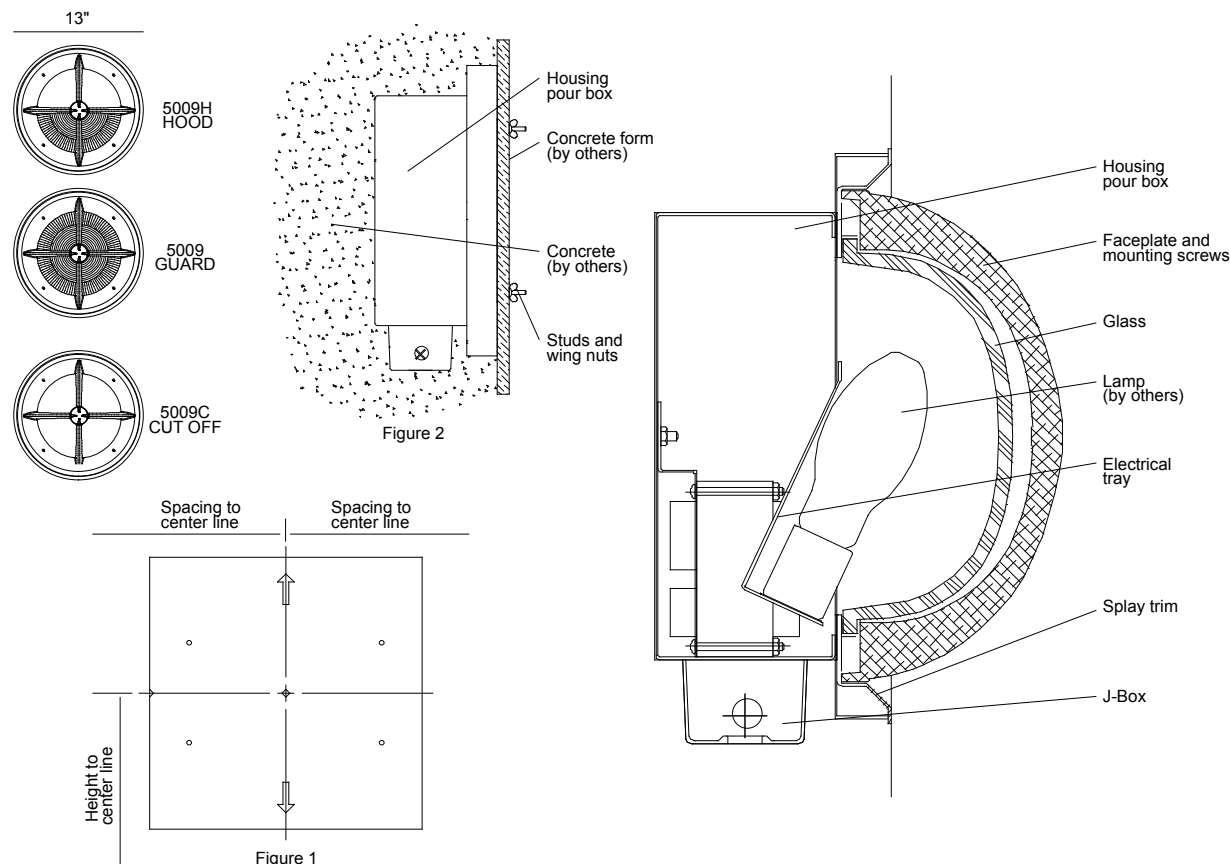
HOUSING INSTALLATION - CONCRETE BLOCK BRICK FACE

- 1 Remove housing assembly from shipping container.
- 2 Cut opening in concrete block wall to suit housing size. J-box should be below unit. Not on top or sides. Secure to wall through (4) holes located in housing. Round housing trim should extend 1" out from wall.
- 3 Install supply wiring per applicable code requirements.
- 4 Install trim adapter to existing trim on housing allowing required brick thickness extension from wall. Seal trim adapter to trim at housing with silicone.
- 5 Install brick face. Mortar between brick and adapter trim to create flat surface for splay trim to seal against.

ELECTRICAL TRAY AND FACEPLATE INSTALLATION

- 1 Remove electrical tray assembly from shipping carton.
- 2 Remove internal j-box cover from housing and pull out supply wires. Thread electrical white, black and ground leads from ballast tray through j-box cover and connect to appropriate supply leads.
- 3 Push all splices into j-box and re-attach cover plate.
- 4 Install ballast tray and secure with nuts provided.
- 5 Remove faceplate assembly from shipping carton. Install splay trim with screws provided. Silicone seal may be required to seal between brick face and splay trim.
- 6 Install electrical tray with screws provided and insert lamp as required.
- 7 Install faceplate to splay trim with (4) screws provided.
- 8 Energize and test as required.

REV. 12/09/09



IMPORTANT

Disconnect power before installing fixtures. Read instructions before starting work. This product must be installed in accordance with the applicable installation code by a person familiar with the construction and operation of the product and the hazards involved.

Saturna 5009 Series

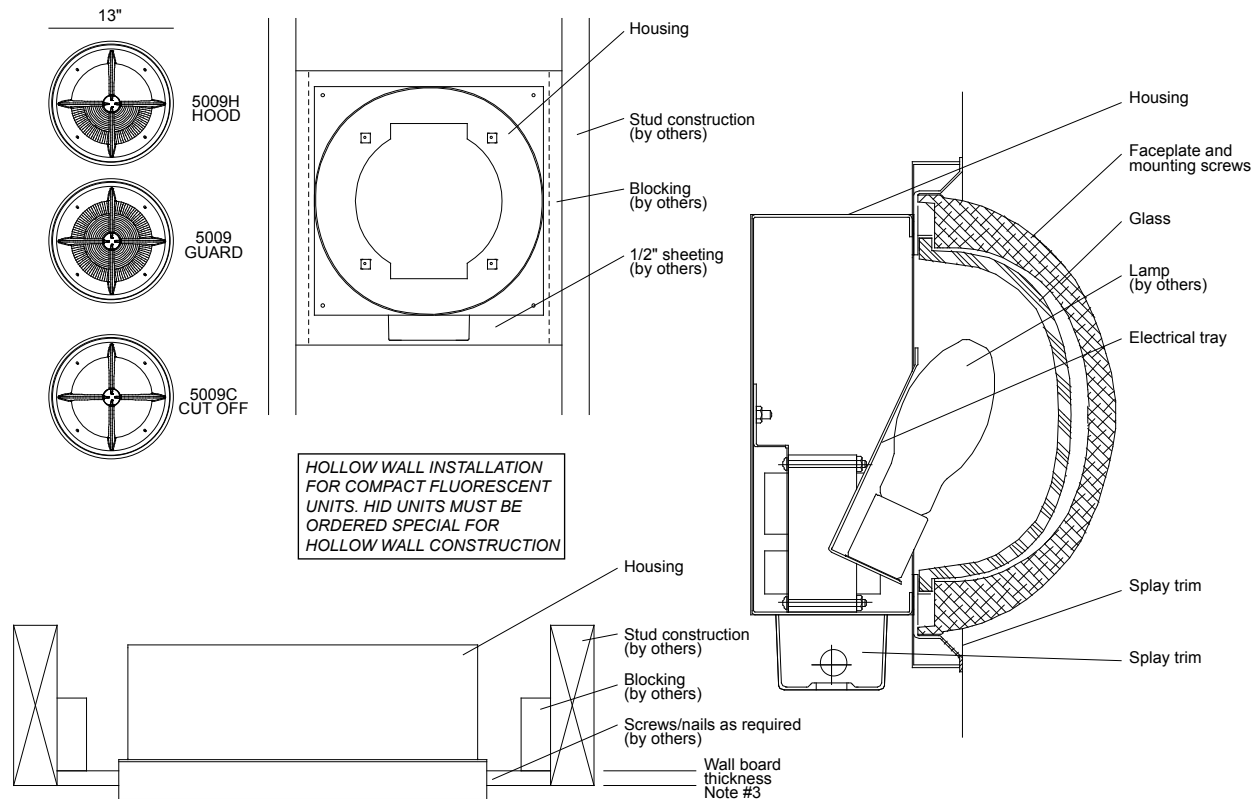
HOUSING INSTALLATION - CONCRETE POUR

- 1 Remove housing from shipping carton. Lay out center line of luminaire positions on concrete form. (Fig.1)
- 2 Position template (provided) over marked center line luminaire spacings (make sure template is level and arrows are in the up and down position). Drill 1/4" holes through form. (Fig.1)
- 3 Install housing on concrete side of form using 3" long studs and wing nuts (provided). Ensure that j-box is properly oriented. J-box down or on back. (fig.2) Check that unit is level.
- 4 If tile or other surface treatment is used the housing position must be adjusted to suit prior to pouring concrete.
- 5 Install conduit as required and pull supply circuit wires per applicable electrical codes.
- 6 Remove wing nuts and studs after concrete is cured and before forms are stripped.

ELECTRICAL TRAY AND FACEPLATE INSTALLATION

- 1 Remove electrical tray from shipping carton.
- 2 Remove internal j-box cover from housing and pull out supply wires. Thread electrical white, black and ground leads from ballast tray thru j-box cover and connect to appropriate supply leads.
- 3 Push all splices into j-box and re-attach cover plate.
- 4 Install ballast tray and secure with nuts provided.
- 5 Remove faceplate assembly from shipping carton. Install splay trim with screws provided. Caulking may be required to seal splay trim to mounting surface.
- 6 Install electrical tray/reflector with screws provided and insert lamp as required.
- 7 Coat screws with white grease and install faceplate to splay trim with (4) screws provided.
- 8 Energize and test as required.

REV. 12/08/09



IMPORTANT

Disconnect power before installing fixtures. Read instructions before starting work. This product must be installed in accordance with the applicable installation code by a person familiar with the construction and operation of the product and the hazards involved.

Saturna 5009 Series

HOUSING INSTALLATION - HOLLOW WALL

- 1 Remove housing assembly from shipping container.
- 2 Position housing in stud construction to keep at least 1/2" clearance around unit except at mounting points.
- 3 Make sure front edge of housing protrudes enough to be flush with finishing wall plane.
- 4 J-box should be below unit. Not on top or sides.
- 5 Install supply wiring per applicable code requirements.

Notes:

These units are listed/certified as non-ic recessed units. They are meant to be installed with 1/2" space around the recessed housing, except at point of mounting contact. Insulation must be kept away from housing by a minimum of 3 inches. The ballasts are thermally protected to guard against misuse.

ELECTRICAL TRAY AND FACEPLATE INSTALLATION

- 1 Remove electrical tray assembly from shipping carton.
- 2 Remove internal j-box cover from housing and pull out supply wires. Thread electrical white, black and ground leads from ballast tray through j-box cover and connect to appropriate supply leads.
- 3 Push all splices into j-box and re-attach cover plate.
- 4 Install ballast tray and secure with nuts provided.
- 5 Remove faceplate assembly from shipping carton. Install splay trim with screws provided.
- 6 Install electrical tray with screws provided and insert lamp as required.
- 7 Install faceplate to splay trim with (4) screws provided.
- 8 Energize and test as required.