

Sightlines 1635LED Mini Step/Path Low Level Area Light

EXTERIOR

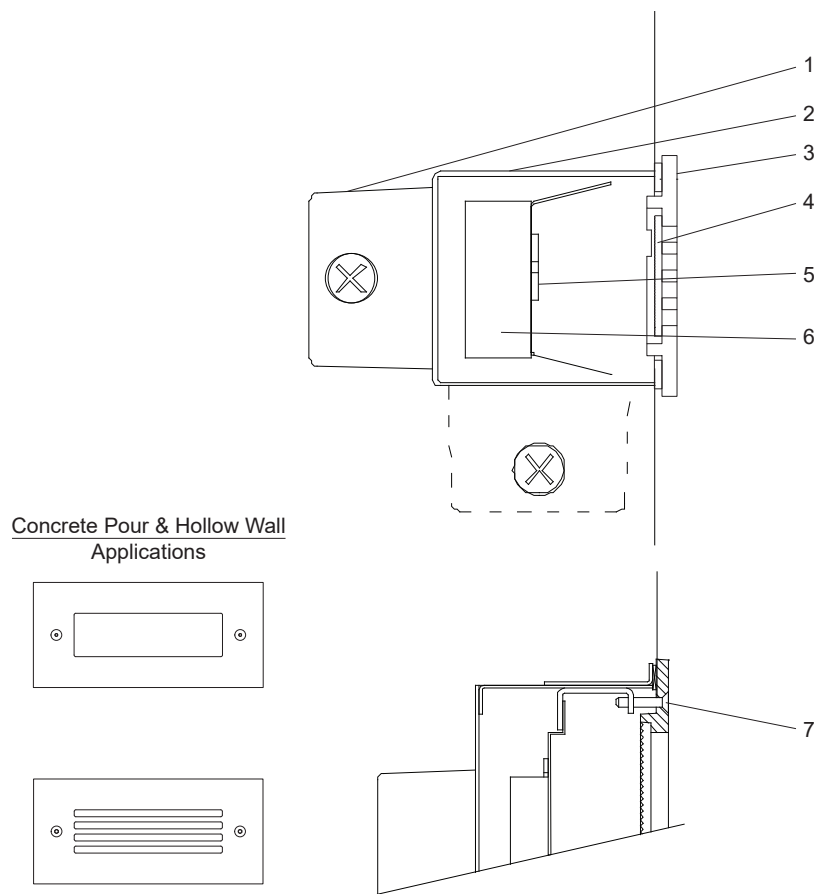
MODEL	LED	COLOR TEMPERATURE		VOLT	FACEPLATE	J-BOX LOCATION		OPTIONS	COLOR				
1635	7L	20 x 0.21 watts 600 lumens¹	40*	4000K	120*	LV*	slotted	RJB*	rear mount j-box	DIM	dimming (0-10V)	WT	white texture
			30	3000K	208	PR	open	BJB	bottom mount j-box			BT	black texture
					240							SM	silver metallic
					277							AN	aluminum natural
												BZ	bronze
												GM	gunmetal
												WS	white satin
												BM	black matte
													RAL

*Standard configuration unless otherwise specified ¹ Source lumens

SAMPLE CATALOG NUMBER: 1635 - 7L - 40 - 120 - PR - RJB - WT

Using this catalog number would order 1 model 1635 low level area light with 20 x 0.21 watt LEDs with a color temperature of 4000K wired to 120 volts with a standard rear mount junction box and an open faceplate painted with white texture polyester powder coat.

CONSTRUCTION	MOUNTING	OPTICAL	PROTECTION
<p>Materials</p> <p>Faceplate: Cast aluminum. Housing: .064" aluminum protected with high gloss white polyester powder coat. Reflector: High gloss white, formed aluminum. Lens: Open - Tempered, sealed prismatic glass. Slotted - Prismatic polycarbonate. Junction box: Gasketed, die cast aluminum, rear mounted, suitable for through branch circuit conductors, suitable for 90°C. (3) - 1/2 NPT plugs, neoprene rubber gaskets.</p> <p>LED driver: Constant current, 350mA. LED boards >82 CRI.</p>	<p>The Sightlines 1635LED series is designed for concrete pour installations and hollow wall construction in compact fluorescent versions. Units are non IC rated so the insulation, if any, must be kept 3" away from the housing and the housing should have 1/2" clearance all around except at the mounting points/surface. See Installation Instructions on the Rebelle website for further details. Conduits must be sealed against water entry into the fixture housing as outlined in the National Electric Code.</p>	<p>The Sightlines 1635LED units are offered with slotted or open faceplates. A white polyester powder coated reflector directs light output. Reflector is sealed behind faceplate assembly so that water and other contaminants are excluded.</p>	<p>The Sightlines 1635LED series is listed for use in wet locations within four feet of the ground to CSA and UL standards. Conduit must be sealed to exclude water from entering the housing.</p>



Sightlines 1635LED Detailed Product Description

- | | |
|---|--|
| <p>1 Junction Box - Suitable for 4 No. 12 AWG Through Branch Circuit Conductors Suitable for 90°C. (3) -1/2 NPT Plugs, Neoprene Rubber Gaskets, Rear Mount Standard</p> <p>2 Recessed Housing - .064" Aluminum Protected with White Polyester Powder Coat</p> <p>3 Cast Aluminum Face Plate - Gasketed</p> <p>4 Lens - Prismatic Polycarbonate Standard or Prismatic Tempered Glass "PR" Option</p> | <p>5 LED Module</p> <p>6 LED Driver - Constant Current</p> <p>7 (2) Stainless Steel, Cap Screw - Captive</p> |
|---|--|