

Sightlines 1635SSLED Mini Step/Path Low Level Area Light EXTERIOR

MODEL	LED	COLOR TEMPERATURE	VOLT	FACEPLATE	J-BOX LOCATION	OPTIONS	COLOR
1635SS	7L 20 x 0.21 watts 600 lumens ¹	40* 4000K 30 3000K	120* 208 240 277	LV* slotted PR open	RJB* rear mount j-box BJB bottom mount j-box	DIM dimming (0-10V)	SS <i>Stainless steel requires periodic maintenance to remove dirt and contaminants, similar to household stainless items.</i>

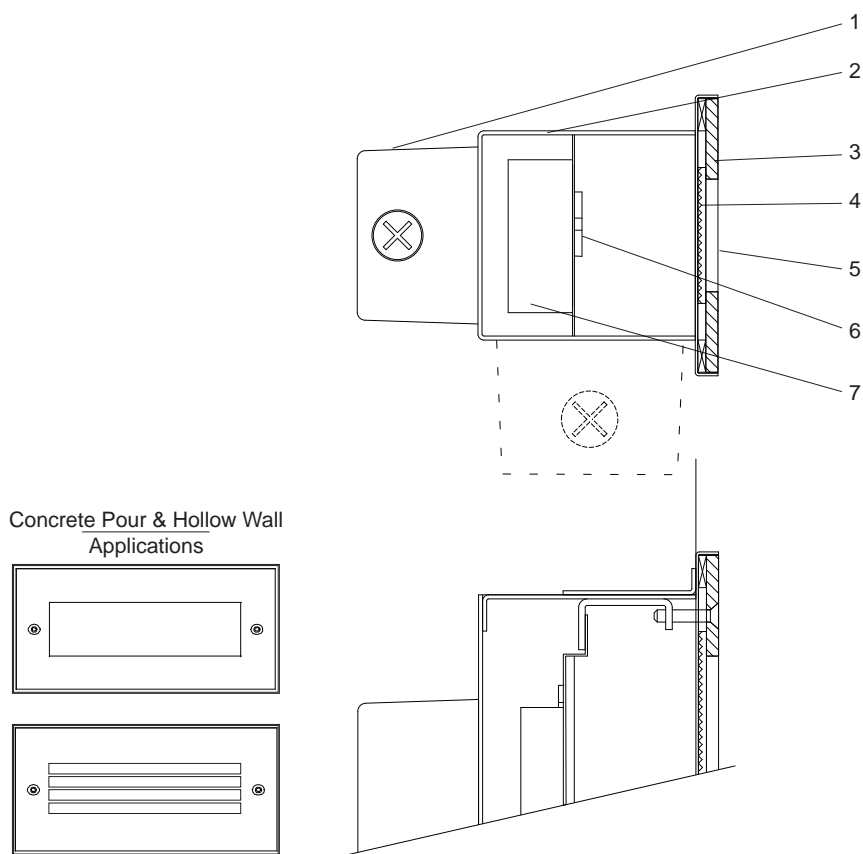
*Standard configuration unless otherwise specified

¹ Source lumens

SAMPLE CATALOG NUMBER: 1635SS - 7L - 40 - 120 - LV - RJB

Using this catalog number would order 1 model 1635SS low level area light with 20 x 0.21 watt LEDs with a color temperature of 4000K wired to 120 volts with a standard rear mount junction box and a slotted stainless steel faceplate.

CONSTRUCTION	MOUNTING	OPTICAL	PROTECTION
<p>Materials Faceplate: Stainless steel, #4 brushed finish. Housing: .064" aluminum protected with high gloss white polyester powder coat. Reflector: High gloss white, formed aluminum. Lens: Open - Tempered, sealed prismatic glass. Louvered - Prismatic polycarbonate. Junction box: Gasketed, die cast aluminum, rear mounted, suitable for through branch circuit conductors, suitable for 90°C. (3) - 1/2 NPT plugs, neoprene rubber gaskets.</p> <p>LED driver. Constant current, 350mA. LED boards >82 CRI.</p>	<p>The Sightlines 1635SSLED series is designed for concrete pour installations and hollow wall construction in compact fluorescent versions. Units are non IC rated so the insulation, if any, must be kept 3" away from the housing and the housing should have 1/2" clearance all around except at the mounting points/surface. See Installation Instructions on the Rebelle website for further details. Conduits must be sealed against water entry into the fixture housing as outlined in the National Electric Code.</p>	<p>The Sightlines 1635SSLED units are offered with slotted or open faceplates. A white polyester powder coated reflector directs light output. Reflector is sealed behind faceplate assembly so that water and other contaminants are excluded.</p>	<p>The Sightlines 1635SSLED series is listed for use in wet locations within four feet of the ground to CSA and UL standards. Conduit must be sealed to exclude water from entering the housing.</p>



Sightlines 1635SSLED Detailed Product Description

- | | |
|--|--|
| <p>1 Junction Box - Suitable for 4 No. 12 AWG Through Branch Circuit Conductors Suitable for 90°C. (3) - 1/2 NPT Plugs, Neoprene Rubber Gaskets, Back Mount Standard</p> <p>2 Recessed Housing - .064" Aluminum Protected with White Polyester Powder Coat</p> <p>3 Stainless Steel Face Plate - Gasketed with Enclosure Trim</p> <p>4 Lens - Prismatic Polycarbonate Standard or Prismatic Tempered Glass "PR" Option</p> | <p>5 (2) Stainless Steel, Cap Screw - Captive</p> <p>6 LED Module</p> <p>7 LED Driver - Constant Current</p> |
|--|--|