

# Sightlines 2400LED Mini Step/Path Low Level Area Light

EXTERIOR

MODEL	LED		COLOR TEMPERATURE		VOLT	FACEPLATE		OPTIONS		COLOR	
2400	7L	20 x 0.21 watts 600 lumens¹	40*	4000K	120*	LV*	slotted	DIM	dimming driver (0-10 volt)	WT	white texture
			30	3000K	208	PR	open			BT	black texture
					240					SM	silver metallic
					277					AN	aluminum natural
										BZ	bronze
										GM	gunmetal
										WS	white satin
										BM	black matte
											RAL

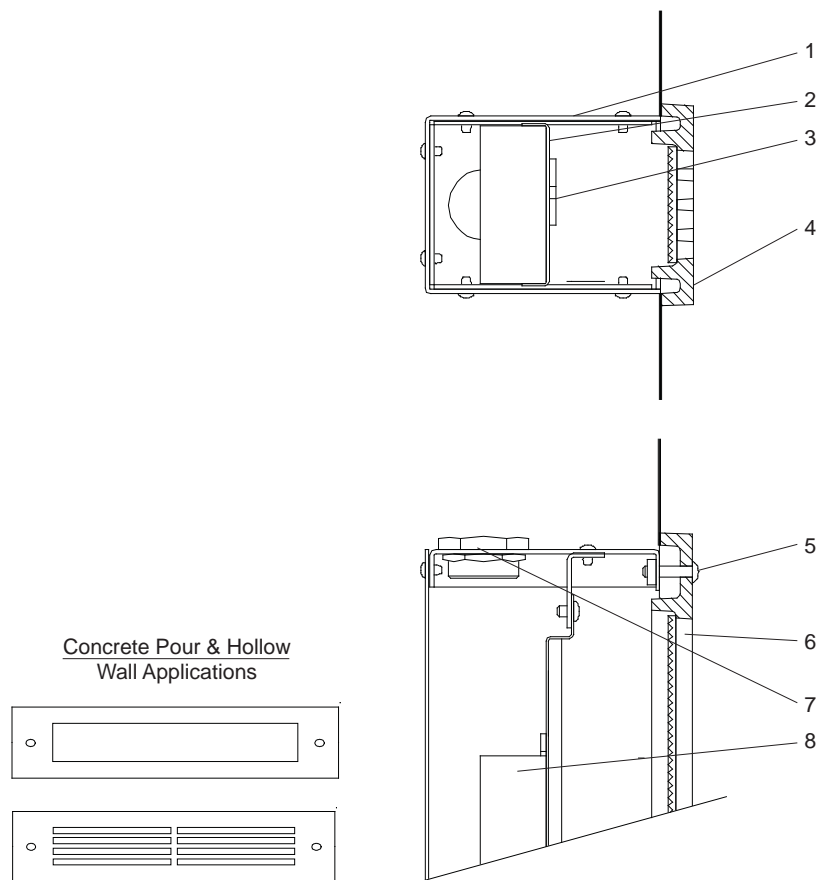
\*Standard configuration unless otherwise specified

<sup>1</sup> Source lumens

SAMPLE CATALOG NUMBER: 2400 - 7L - 40 - 120 - LV - WT

Using this catalog number would order 1 model 2400 low level area light with 20 x 0.21 watt LEDs with a color temperature of 4000K wired to 120 volts and a slotted faceplate painted with white texture polyester powder coat.

CONSTRUCTION	MOUNTING	OPTICAL	PROTECTION
<p><b>Materials</b> Faceplate: Cast aluminum. Housing: .064" aluminum protected with high gloss white polyester powder coat. Reflector: High gloss white, formed aluminum. Lens: Open - Tempered, sealed prismatic glass. Louvered face: Prismatic polycarbonate. Suitable for through branch circuit conductors, suitable for 90°C. (2) - 1/2 NPT plugs, neoprene rubber gaskets.</p> <p>LED driver: Constant current, 350mA. LED boards &gt;82 CRI.</p>	<p>The Sightlines 2400LED series is designed for concrete pour installations and hollow wall construction. Units are non IC rated so the insulation, if any, must be kept 3" away from the housing and the housing should have 1/2" clearance all around except at the mounting points/surface. See Installation Instructions on the Rebelle website for further details. Conduits must be sealed against water entry into the fixture housing as outlined in the National Electric Code.</p>	<p>The Sightlines 2400LED units are offered with slotted or open faceplates. A white polyester powder coated reflector directs light output. Reflector is sealed behind faceplate assembly so that water and other contaminants are excluded.</p>	<p>The Sightlines 2400LED series is listed for use in wet locations within four feet of the ground to CSA and UL standards. Conduit must be sealed to exclude water from entering the housing.</p>



## Sightlines 2400LED Detailed Product Description

- |   |  |
|---|--|
| <p>1 Housing .064" Aluminum Protected with White Polyester Powder Coat</p> <p>2 Reflector - High Gloss White - .036" Thick</p> <p>3 LED Module</p> <p>4 Cast Aluminum, Gasketed Face Plate</p> <p>5 (2) Stainless Steel, Cap Screws - Captive</p> | <p>6 Sealed Prismatic Polycarbonate Lens - .125" Thick or Prismatic Tempered Glass Lens "PR" Option</p> <p>7 1/2 NPT Plugs (2) - Suitable for 4 No. 12 AWG Through Branch Circuit Conductors Suitable for 90°C.</p> <p>8 LED Driver - Constant Current</p> |
|---|--|