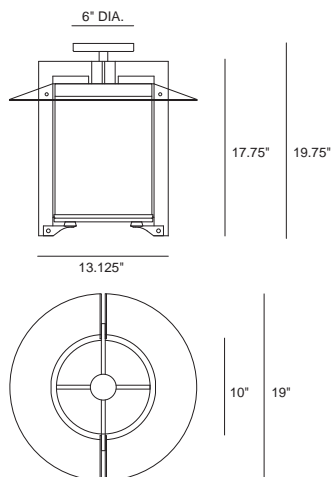




Integral driver option, shown without reflector disk



Orchestra Circle 2756LED Maxi Ceiling Mount

INTERIOR

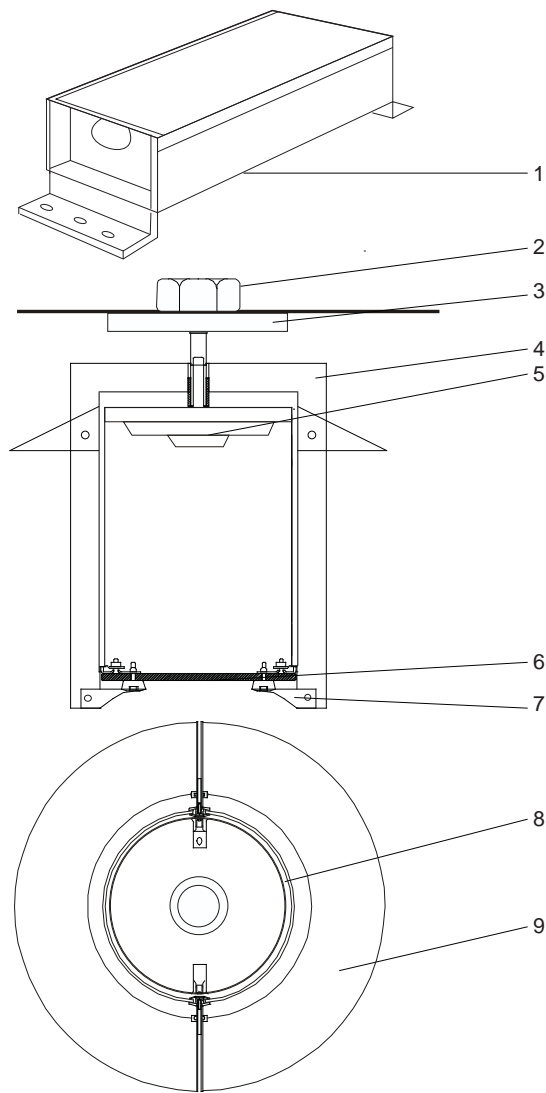
MODEL	LED		VOLT	SHIELD	DIFFUSER	DRIVER LOCATION	OPTIONS	COLOR
	WATTS	COLOR TEMPERATURE						
2756	32L 2612 lumens* 32w LED/ 38w system	40 4000K	120*	PF <i>perforated liner</i>	RF* <i>frost</i>	REM* <i>remote driver</i>	C86 <i>ball aligner hanger</i>	WT <i>white texture</i>
		30 3000K	208		CL <i>clear</i>	INT <i>integral driver</i>	WL <i>wet location listing</i>	BT <i>black texture</i>
		35 3500K	240					SM <i>silver metallic</i>
			277				DIM <i>dimming driver</i>	AN <i>aluminum natural</i>
			347+				90 <i>90 CRI</i>	BZ <i>bronze</i>
								GM <i>gunmetal</i>
								WS <i>white satin</i>
								BM <i>black matte</i>
								RAL <i>specify no.</i>

*Standard configuration unless otherwise specified *Delivered lumens based on PF option and standard frost diffuser (4000K, 80CRI) +Consult factory

SAMPLE CATALOG NUMBER: 2756 - 32L40 - 120 - RF - REM - WT

Using this catalog number would order 1 model 2756 maxi circle ceiling mount luminaire with 4000K, 80 CRI LED light engine at 120 volts with frosted acrylic lens and remote driver, painted with white texture polyester powder coat.

CONSTRUCTION	MOUNTING	OPTICAL	PROTECTION
<p>Materials Support Frame: Heavy aluminum plate. Hinge/Lock up: Pressure die cast aluminum. Ceiling canopy / Reflector disk: Aluminum sheet, die formed. Diffusers (side): Thermo-formed acrylic. Bottom lens: Acrylic. Fasteners: Stainless steel.</p> <p>Electrical Components Driver: Constant current 900mA, 84% efficiency. Light engine: COB 1208 24mm x 20mm with a 15mm LES.</p>	<p>This luminaire is designed to mount to a recessed 4" octagon j-box (by others). Remote mounted driver assemblies are standard (consult factory for lamp to ballast distance). Optional integral driver assemblies are offered. For wet locations luminaire must be restrained from wind action. Special hanger or restraint required (by others).</p>	<p>Luminaire has a choice of frost or clear lens and diffuser, with frost supplied as standard. The perforated liner is supplied if specified. The reflector disk is fixed in the top position. Standard optic, Type V square (130°).</p>	<p>The Orchestra ceiling mount is listed for use in damp locations to UL and CSA standards. An optional wet location label can be provided.</p> <p>LEDs are rated for 50,000 hour life with lumen maintenance >70% (L70).</p>



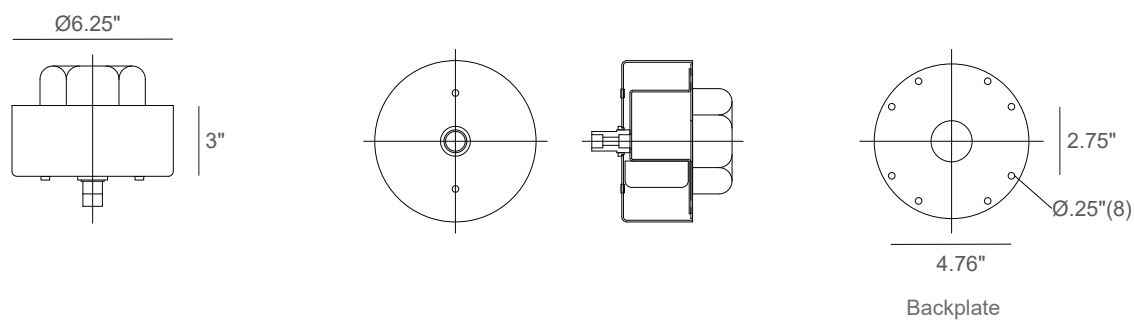
Remote Driver Configuration

Orchestra Circle 2756LED Detailed Product Description

- | | | | |
|---|--|---|--|
| 1 | Driver - 900 ma. (Remote Mounted) | 5 | Downlight LED Light Engine with Silicone Optic and Heat Sink |
| 2 | Recessed Octagon J-Box (By Others) | 6 | Acrylic Lens .375" Thick |
| 3 | Canopy Assembly with Hangstraight Swivel | 7 | Diecast Aluminum Lock Up |
| 4 | Frame Support .250" Aluminum | 8 | Acrylic Cylinder (.125" Thick) |
| | | 9 | Reflector Disk .102" Aluminum (Fixed - Top Position) |

Orchestra Circle 2756LED Maxi Ceiling Mount

Integral Driver Canopy Dimensions



Remote Driver Dimensions

