

## Orchestra Circle 2757SL LED Mini Linear Wall Sconce EXTERIOR

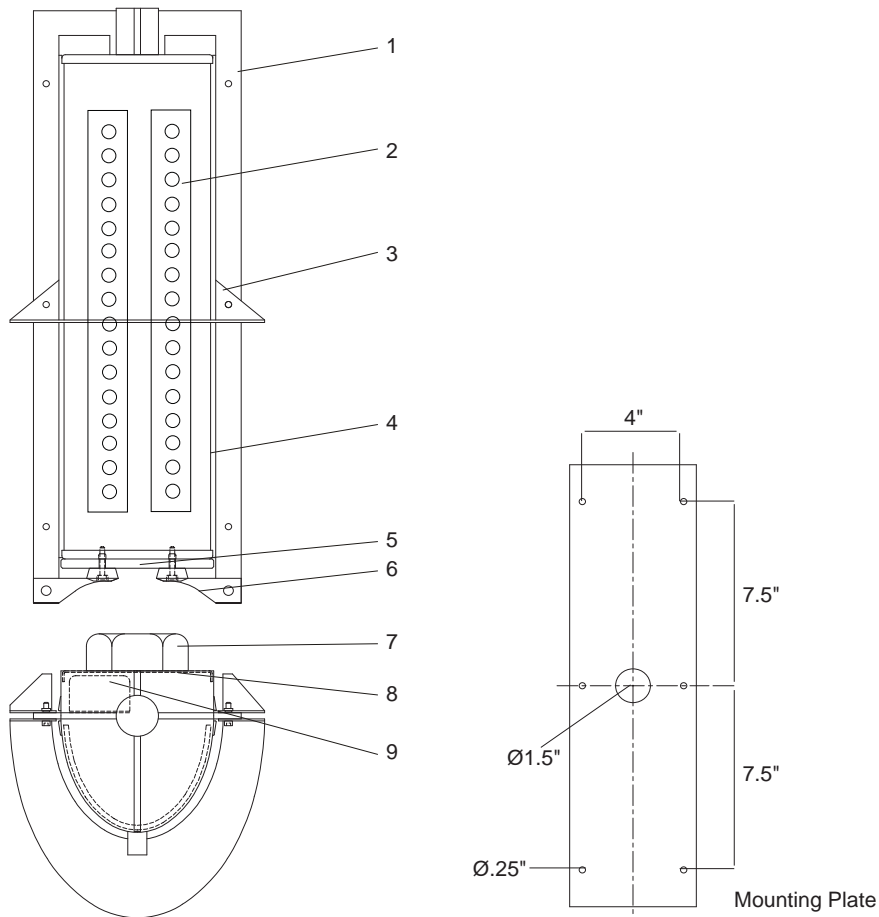
MODEL	LED	COLOR TEMPERATURE	VOLT	DIFFUSER	SHIELD	OPTIONS	COLOUR
2757SL	20L <small>LED module 1950 lumens*</small>	40* 4000K	120*	RF <i>frost</i>	PF <i>perforated liner</i>	DIM <i>dimming driver</i>	WT <i>white texture</i>
		35 3500K	208			EM <i>emergency battery</i>	BT <i>black texture</i>
		30 3000K	240				SM <i>silver metallic</i>
			277				AN <i>aluminum natural</i>
			347+				BZ <i>bronze</i>
							GM <i>gunmetal</i>
							WS <i>white satin</i>
							BM <i>black matte</i>
							RAL <i>specify no.</i>

\*Standard configuration unless otherwise specified +Consult factory <sup>1</sup>Delivered, 4000K

SAMPLE CATALOG NUMBER: 2757SL - 20L - 40 - 120 - RF - WT

Using this catalog number would order 1 model 2757SL mini linear LED wall sconce with 20 watt, 4000K LED module wired to 120 volts with frosted acrylic lens, painted with white texture polyester powder coat.

CONSTRUCTION	MOUNTING	OPTICAL	PROTECTION
<p><b>Materials</b> Support frame: Heavy aluminum plate. Hinge/Lock up: Pressure die cast aluminum. Reflector disk: Aluminum sheet, die formed. Diffusers (side): Thermo-formed acrylic. Bottom lens: Acrylic. Fasteners: Stainless steel.</p> <p><b>Electrical Components</b> Driver: Constant current high efficiency 350ma. LED module: &gt;82CRI.</p>	<p>Designed for wall mounting over a 4" octagonal j-box. A heavy gauge mounting plate is attached to the j-box. Unit hooks on to the mounting plate and is secured with two stainless steel set screws. Silicone seal is required across the top of the housing and down each side to exclude moisture in exterior applications.</p>	<p>Frosted outer diffuser with an optional perforated metal liner to provide for glare control. The solid reflector disk can be positioned - top, middle or bottom to direct light appropriately for the intended use. Lumen multiplier for 3500K - 0.925, 3000K - 0.896.</p>	<p>The Orchestra mini wall sconce is NRTL listed for use in wet locations to UL and CSA Standards.</p> <p>LEDs are rated for 50,000 hour life with lumen maintenance &gt;70% (L70).</p>



## Orchestra Circle 2757SL Detailed Product Description

- |   |   |   |                                       |
|---|---|---|---------------------------------------|
| 1 | Frame Support .250" Aluminum                          | 6 | Diecast Aluminum Lock Up              |
| 2 | LED Metal Core Boards                                 | 7 | 4" Recessed Octagon J-Box (By Others) |
| 3 | Reflector Disk .081" Aluminum (3 Position Adjustable) | 8 | Mounting Plate .064" Aluminum         |
| 4 | Acrylic Lens .125" Thick                              | 9 | Driver - Constant Current             |
| 5 | Acrylic Lens .375" Thick                              |   |                                       |