

# Streamline 6002LED Maxi Indirect Ceiling Wash INTERIOR/EXTERIOR

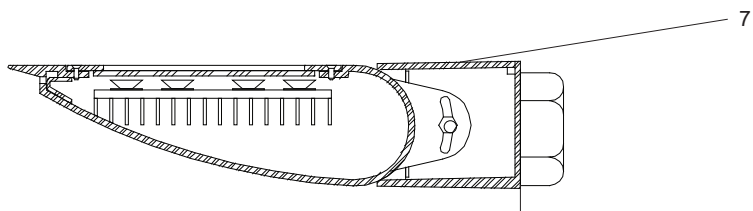
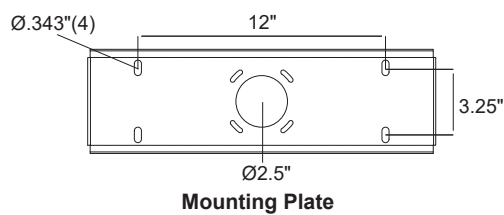
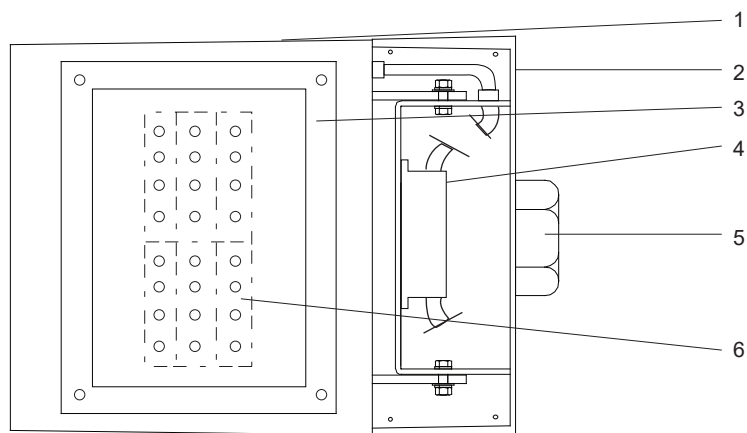
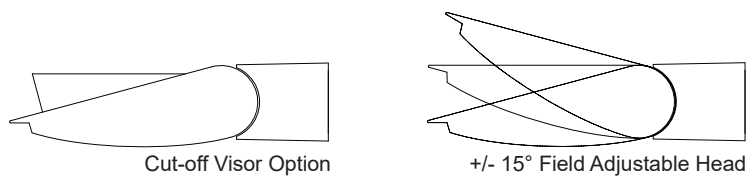
MODEL	WATTS	COLOR TEMPERATURE	VOLT	OPTIONS	COLOR
6002	200L 1 x 200 watts 15000 lumens <sup>1</sup>	3K 3000K	120*	WL wet location	WT white texture
	167L 1 x 167 watts 12500 lumens <sup>1</sup>	35K 3500K	208	CV cut-off visor for downward tilt	BT black texture
		4K 4000K	240	DIM 0 - 10 volt dimmable driver	SM silver metallic
	134L 1 x 134 watts 10000 lumens <sup>1</sup>	5K 5000K	277	NAT natatorium construction	AN aluminum natural
					BZ bronze
					GM gunmetal
					WS white satin
					BM black matte
					RAL specify no.

\*Standard configuration unless otherwise specified <sup>1</sup>Delivered lumens (4000K)

SAMPLE CATALOG NUMBER: 6002 - 200L - 4K - 120 - WT

Using this catalog number would order 1 model 6002LED maxi indirect ceiling wash luminaire with a 200 watt, 4000K light engine wired to 120 volts, painted white texture polyester powder coat.

CONSTRUCTION	MOUNTING	OPTICAL	PROTECTION
<p>Materials</p> <p>Adjustable lamp housing: Cast aluminum. Driver enclosure: Cast aluminum with top cover plate. Lens: Clear, tempered glass in captive cast aluminum gasketed frame.</p> <p>Electrical Components</p> <p>Light engine: Aluminum core PCB each with 4 LEDs and Ledil Strata - SQ optics.</p> <p>Driver: High efficiency, &lt;20% THD, &gt;90% PF</p>	<p>The 6002LED series is designed for wall mounting over a recessed j-box. Wall must have sufficient strength to support luminaire. The mounting plate is secured to wall and the luminaire is hooked on to the plate and locked in place with captive set screws.</p> <p>Maximum fixture weight 63 lbs.</p>	<p>The 6002LED optical system is optimized to provide an asymmetric indirect distribution. Head is adjustable (+/- 15°) to customize aiming upon installation, if required.</p>	<p>The 6002LED is normally provided for indoor dry or damp locations to UL and CSA standards but, if ordered, can be made suitable for wet locations to UL and CSA standards. (LOC 4)</p> <p>All units have a protective, tempered, glass shield to protect the LED compartment. The wet location units are totally sealed for wet location usage (IP65).</p> <p>LEDs are rated for 50,000 hour life with lumen maintenance &gt; 70% (L70).</p>



# Streamline Indirect 6002LED

## Detailed Product Description

- |   |   |   |                                       |
|---|---|---|---------------------------------------|
| 1 | Adjustable Lamp Housing (+/-15°) - Cast Aluminum      | 5 | Recessed 4" Octagon J-Box (By Others) |
| 2 | Driver Enclosure - Cast Aluminum with Top Cover Plate | 6 | LED Boards                            |
| 3 | Enclosed LED Glass Frame and Heat Sink Assembly       | 7 | Housing Assembly                      |
| 4 | Driver  |   |                                       |