

Streamline 6003ZLED Mini Direct Wall Mount Downlight INTERIOR/EXTERIOR

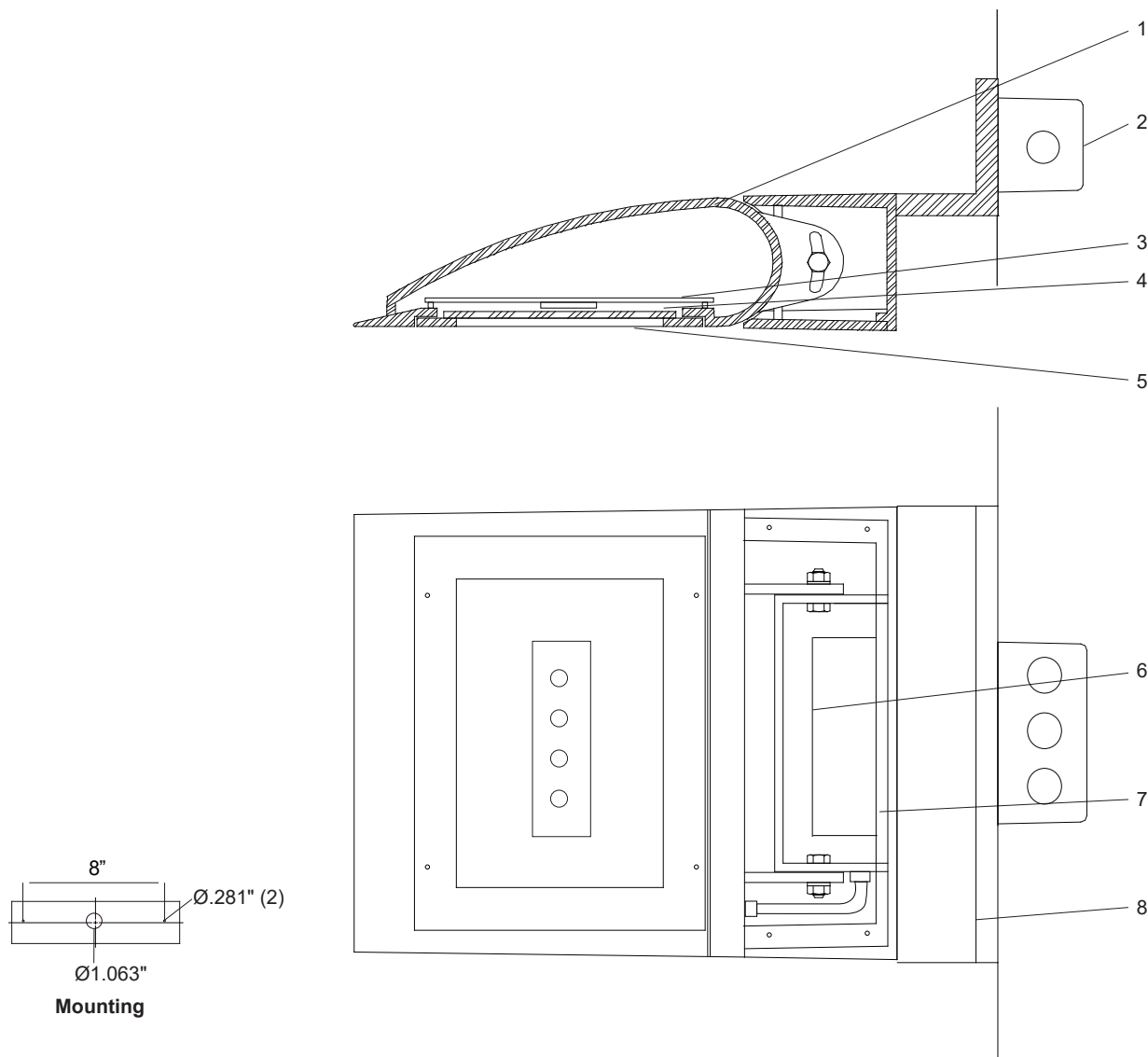
MODEL	WATTS	COLOR TEMPERATURE	VOLT	DISTRIBUTION	OPTIONS	COLOR
6003Z	32L 1 x 32 watts 2500 lumens ¹	3K 3000K	120*	T2 type II distribution	DIM 0 - 10 volt dimmable driver	WT white texture
		35K 3500K	208	T3 type III distribution		BT black texture
		4K 4000K	240	T4 type IV distribution		SM silver metallic
		5K 5000K	277			AN aluminum natural
						BZ bronze
						GM gunmetal
						WS white satin
						BM black matte
						RAL specify no.

*Standard configuration unless otherwise specified ¹Delivered lumens (4000K)

SAMPLE CATALOG NUMBER: 6003Z - 32L - 4K - 120 - T2 - WT

Using this catalog number would order 1 model 6003Z mini direct wall mount downlight with a 32 watt, 4000K light engine with type II distribution, wired to 120 volts, painted white texture polyester powder coat.

CONSTRUCTION	MOUNTING	OPTICAL	PROTECTION
<p>Materials Adjustable lamp housing: Cast aluminum. Driver enclosure: Cast aluminum with top cover plate. Lens: Solite, tempered glass in captive frame.</p> <p>Electrical Components Light engine: Aluminum core PCB each with 4 LEDs and Ledil Strata - SQ optics. Driver: High efficiency, <20% THD, >90% PF</p>	<p>The 6003ZLED series is designed for wall mounting over a recessed FS junction box which is located parallel to the luminaire back on the center line. The luminaire mounting plate is secured to the mounting surface outside of the FS box location and the luminaire is hooked on the plate and secured with set screws on the bottom. Silicone sealant is required in wet locations along back and down sides to keep moisture out of wiring compartment.</p> <p>Maximum fixture weight 15 lbs.</p>	<p>The 6003ZLED optical system is optimized to provide an asymmetric area light distribution with full cutoff classification.</p>	<p>The 6003ZLED is CSA/UL listed for use in wet locations.</p> <p>LEDs are rated for 50,000 hour life with lumen maintenance > 70% (L70).</p>



Streamline Direct 6003ZLED Detailed Product Description

- | | | | |
|---|--|---|---|
| 1 | LED Housing - Cast Aluminum | 5 | Glass - Solite, Tempered 5/32" Thick in Captive Frame |
| 2 | FS Box 2" x 4" Rectangle (By Others)
Mount Horizontally | 6 | Driver Compartment - Cast Aluminum |
| 3 | Heatsink - .188" Aluminum | 7 | Driver - High Efficiency, <20% THD and <90% PF |
| 4 | Light Engine - 4 x LEDs with Optics | 8 | Cantilever Support Arm - Cast Aluminum |