

Streamline 6007LED

Midi Indirect Ceiling Wash

INTERIOR

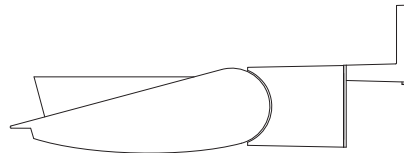
MODEL	WATTS	COLOR TEMPERATURE	VOLT	OPTIONS	COLOR
6007	134L 1 x 134 watts 10500 lumens ¹	3K 3000K	120*	WL wet location	WT white texture
		35K 3500K	208	CV cut off visor for downward tilt	BT black texture
	101L 1 x 101 watts 7900 lumens ¹	4K 4000K	240	DIM dimming driver 0 - 10V control	SM silver metallic
		5K 5000K	277	NAT natatorium construction	AN aluminum natural
					BZ bronze
					GM gunmetal
					WS white satin
					BM black matte
					RAL specify no.

*Standard configuration unless otherwise specified ¹Delivered lumens (4000K)

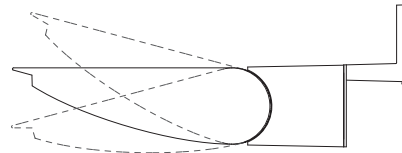
SAMPLE CATALOG NUMBER: 6007 - 134L - 4K - 120 - WT

Using this catalog number would order 1 model 6007 midi indirect ceiling wash luminaire with 134 watt, 4000K light engine wired to 120 volts, painted white texture polyester powder coat.

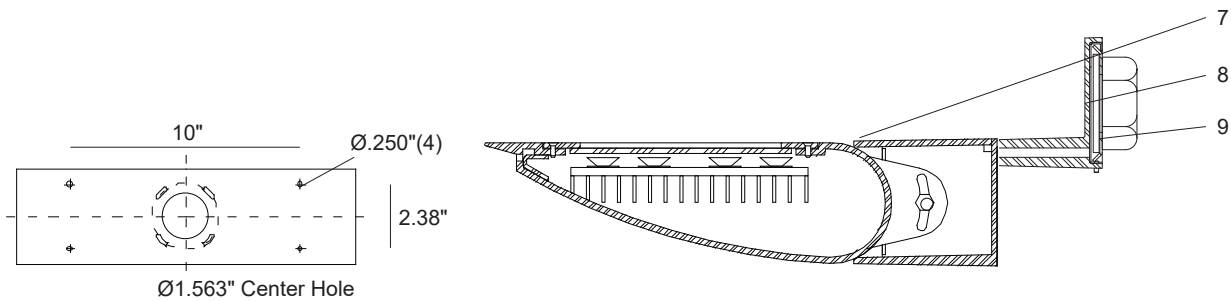
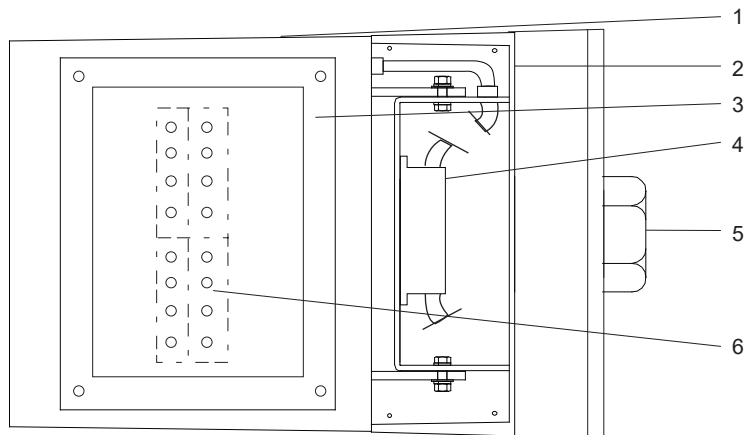
CONSTRUCTION	MOUNTING	OPTICAL	PROTECTION
<p>Materials</p> <p>Adjustable lamp housing: Cast aluminum. Driver enclosure: Cast aluminum with top cover plate. Lens: Clear, tempered glass in captive cast aluminum gasketed frame. Cantilever support arm: Cast aluminum.</p> <p>Electrical Components</p> <p>Light engine: Aluminum core PCB each with 4 LEDs and Lediil Strata - SQ optics.</p> <p>Driver: High efficiency, <20% THD, >90% PF</p>	<p>The 6007LED series is designed for wall mounting over a recessed j-box. Wall must have sufficient strength to support luminaire. The mounting plate is secured to wall and the luminaire is hooked on to the plate and locked in place with set screws.</p> <p>Maximum fixture weight 42 lbs.</p>	<p>The 6007LED optical system is optimized to provide an asymmetric indirect distribution. Head is adjustable (+/- 15°) to customize aiming upon installation, if required.</p>	<p>The 6007LED is normally provided for indoor dry or damp locations to UL and CSA standards but, if ordered, can be made suitable for wet locations to UL and CSA standards. (LOC 4 > 4 FEET)</p> <p>All units have a protective, tempered, glass shield to protect the LED compartment. The wet location units are totally sealed for wet location usage (IP65).</p> <p>LEDs are rated for 50,000 hour life with lumen maintenance > 70% (L70).</p>



Shown with optional cut-off visor



Shown with +/-15° adjustment



Mounting Plate

Streamline Indirect 6007LED

Detailed Product Description

- | | |
|---|--|
| 1 Adjustable Lamp Housing (+/-15°) - Cast Aluminum | 6 LED Boards 4 x LEDs Each |
| 2 Driver Enclosure - Cast Aluminum with Top Cover Plate | 7 Housing Assembly |
| 3 Enclosed LED Glass Frame and Heat Sink Assembly | 8 Cantilever Support Arm - Cast Aluminum |
| 4 Driver | 9 Mounting Plate |
| 5 Recessed 4" Octagon J-Box (By Others) | |