

Streamline 6011LED Maxi Indirect Ceiling Wash

INTERIOR

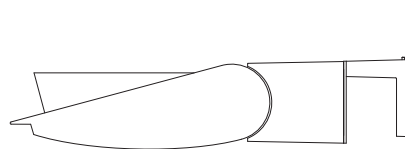
MODEL	WATTS	COLOR TEMPERATURE	VOLT	OPTIONS	COLOR
6011	200L <i>1 x 200 watts 18,600 lumens¹</i>	3K <i>3000K</i>	120*	WL <i>wet location</i>	WT <i>white texture</i>
	167L <i>1 x 167 watts 15,500 lumens¹</i>	35K <i>3500K</i>	208	CV <i>cut-off visor for downward tilt</i>	BT <i>black texture</i>
		4K <i>4000K</i>	240	DIM <i>0 - 10 volt dimmable driver</i>	SM <i>silver metallic</i>
	134L <i>1 x 134 watts 12,400 lumens¹</i>	5K <i>5000K</i>	277	NAT <i>natatorium construction</i>	AN <i>aluminum natural</i>
			347+		BZ <i>bronze</i>
					GM <i>gunmetal</i>
					WS <i>white satin</i>
					BM <i>black matte</i>
					RAL <i>specify no.</i>

*Standard configuration unless otherwise specified ¹Delivered lumens (4000K) +Consult factory

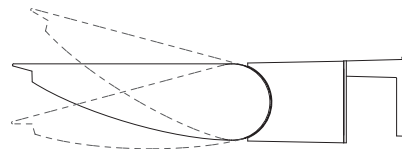
SAMPLE CATALOG NUMBER: 6011 - 200L - 4K - 120 - WT

Using this catalog number would order 1 model 6011 maxi indirect ceiling wash luminaire with a 200 watt, 4000K light engine wired to 120 volts, painted white texture polyester powder coat.

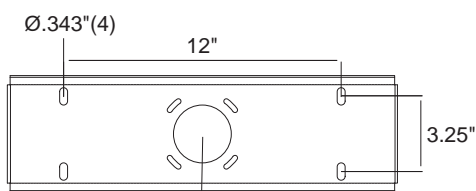
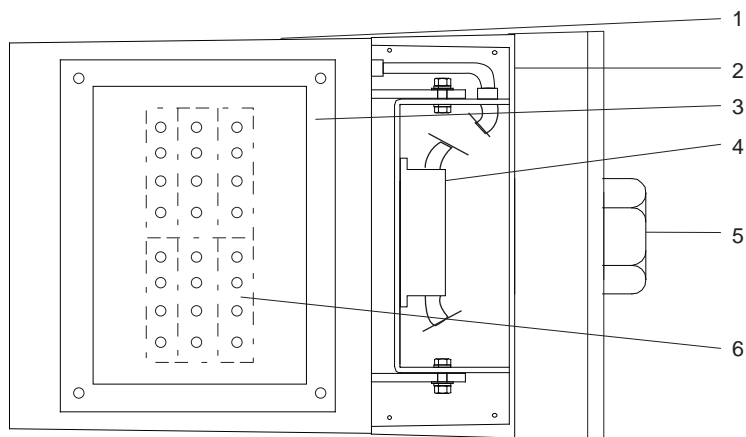
CONSTRUCTION	MOUNTING	OPTICAL	PROTECTION
<p>Materials</p> <p>Adjustable lamp housing: Cast aluminum. Driver enclosure: Cast aluminum with top cover plate. Lens: Clear, tempered glass in captive cast aluminum gasketed frame. Cantilever support arm: Cast aluminum.</p> <p>Electrical Components</p> <p>Light engine: Aluminum core PCB each with 4 Luxeon M emitters and Ledil Strata - SQ optics. Driver: High efficiency, 20% THD, >90% PF</p>	<p>The 6011LED series is designed for wall mounting over a recessed j-box. Wall must have sufficient strength to support luminaire. The mounting plate is secured to wall and the luminaire is hooked on to the plate and locked in place with set screws. Maximum fixture weight 83 lbs.</p>	<p>The 6011LED optical system is optimized to provide an asymmetric indirect distribution. Head is adjustable (+/- 15°) to customize aiming upon installation, if required.</p>	<p>The 6011LED is normally provided for indoor dry or damp locations to UL and CSA standards but, if ordered, can be made suitable for wet locations to UL and CSA standards. (LOC 4)</p> <p>All units have a protective, tempered, glass shield to protect the LED compartment. The wet location units are totally sealed for wet location usage (IP65).</p> <p>LEDs are rated for 50,000 hour life with lumen maintenance > 70% (L70).</p>



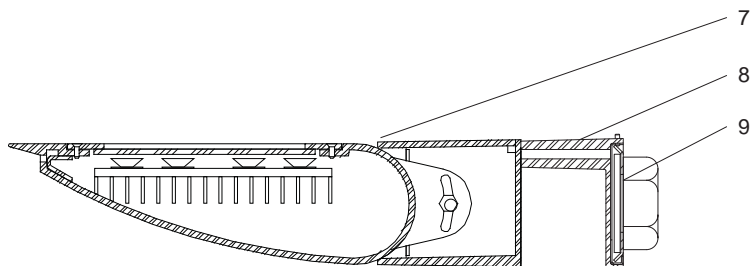
Shown with optional cut-off visor



Shown with +/-15° adjustment



Mounting Plate



Streamline Indirect 6011LED Detailed Product Description

- | | |
|---|---|
| 1 Adjustable Lamp Housing (+/-15°) - Cast Aluminum | 6 LED Boards 4 x Luxeon 'M' Emitters Each |
| 2 Driver Enclosure - Cast Aluminum with Top Cover Plate | 7 Housing Assembly |
| 3 Enclosed LED Glass Frame and Heat Sink Assembly | 8 Cantilever Support Arm - Cast Aluminum |
| 4 Driver | 9 Mounting Plate |
| 5 Recessed 4" Octagon J-Box (By Others) | |