

Streamline 6023LED Maxi Quad Indirect Pendant

INTERIOR

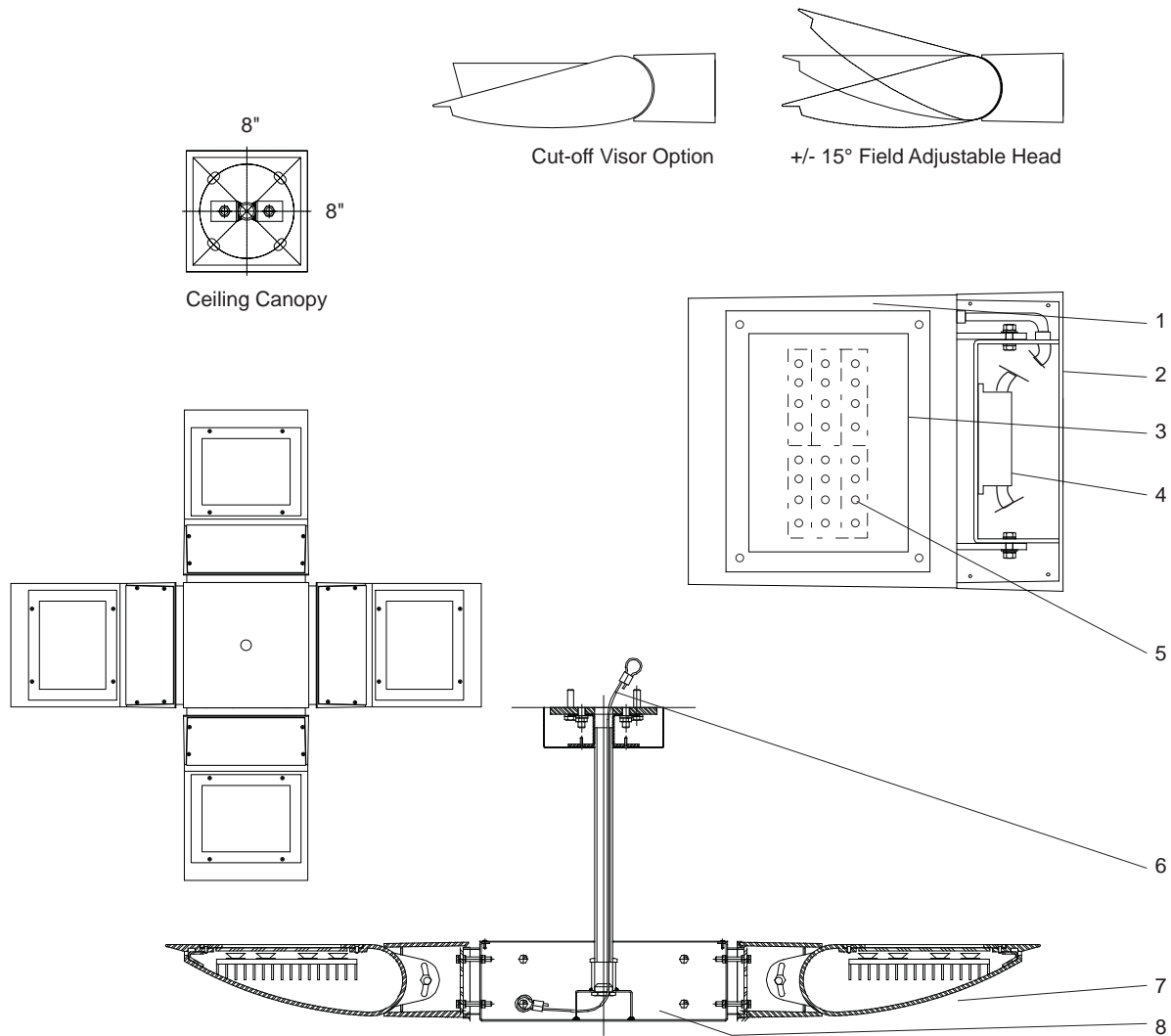
MODEL	WATTS	COLOR TEMPERATURE	VOLT	OPTIONS	COLOR
6023	200L <i>4 x 200 watts 4 x 18,600 lumens¹</i>	3K <i>3000K</i>	120*	P(____) <i>pendant length</i>	WT <i>white texture</i>
	167L <i>4 x 167 watts 4 x 15,500 lumens¹</i>	35K <i>3500K</i>	208	WL <i>wet location</i>	BT <i>black texture</i>
		4K <i>4000K</i>	240	CV <i>cut-off visor for downward tilt</i>	SM <i>silver metallic</i>
	134L <i>4 x 134 watts 4 x 12,400 lumens¹</i>	5K <i>5000K</i>	277	DIM <i>0 - 10 volt dimmable driver</i>	AN <i>aluminum natural</i>
			347+	NAT <i>natatorium construction</i>	BZ <i>bronze</i>
					GM <i>gunmetal</i>
					WS <i>white satin</i>
					BM <i>black matte</i>
					RAL <i>specify no.</i>

*Standard configuration unless otherwise specified ¹Delivered lumens (4000K) +Consult factory

SAMPLE CATALOG NUMBER: 6023 - 200L - 4K - 120 - P24 - WT

Using this catalog number would order 1 model 6023 maxi quad indirect ceiling wash pendant luminaire with a 200 watt, 4000K light engine wired to 120 volts in each of the luminaire heads and a pendant length of 24", painted white texture polyester powder coat.

CONSTRUCTION	MOUNTING	OPTICAL	PROTECTION
<p>Materials Adjustable lamp housing: Cast aluminum. Driver enclosure: Cast aluminum with top cover plate. Lens: Clear, tempered glass in captive cast aluminum gasketed frame. Mounting stem: Aluminum tubing. Center housing: 12 ga. steel, welded and ground.</p> <p>Electrical Components Light engine: Aluminum core PCB each with 4 Luxeon M emitters and Ledil Strata - SQ optics. Driver: High efficiency, <20% THD, >90% PF</p>	<p>The 6023LED luminaire is designed for pendant mounting in a quad cluster. The substantial mounting canopy and 1-1/8" stem supports a center housing to which four 6002 luminaire heads are fastened. The canopy covers a recessed 4" octagon j-box. Total luminaire weight is 270 lbs, which must be accommodated by the ceiling construction. Connection of stem is rigid and includes an aircraft cable safety cable. Consult factory for sloped ceiling and earthquake resistant mounting.</p>	<p>The 6023LED optical system is optimized to provide an asymmetric indirect distribution. Head is adjustable (+/- 15°) to customize aiming upon installation, if required.</p>	<p>The 6023LED is normally provided for indoor dry or damp locations to UL and CSA standards but, if ordered, can be made suitable for wet locations to UL and CSA standards. (LOC 2, covered ceiling)</p> <p>All units have a protective, tempered, glass shield to protect the LED compartment. The wet location units are totally sealed for wet location usage (IP65).</p> <p>LEDs are rated for 50,000 hour life with lumen maintenance > 70% (L70).</p>



Streamline Indirect 6023LED Detailed Product Description

- | | | | |
|---|---|---|---|
| 1 | Adjustable Lamp Housing (+/-15°) - Cast Aluminum | 6 | Mounting Stem - 1 1/8" Tubing with Internal 0.125" Aircraft Safety Cable (Length TBA) |
| 2 | Driver Enclosure - Cast Aluminum with Top Cover Plate | 7 | Housing Assembly |
| 3 | Enclosed LED Glass Frame and Heat Sink Assembly | 8 | Quad Mounting Bracket - Heavy Gauge Steel |
| 4 | Driver | | |
| 5 | LED Boards 4 x Luxeon 'M' Emitters Each | | |